

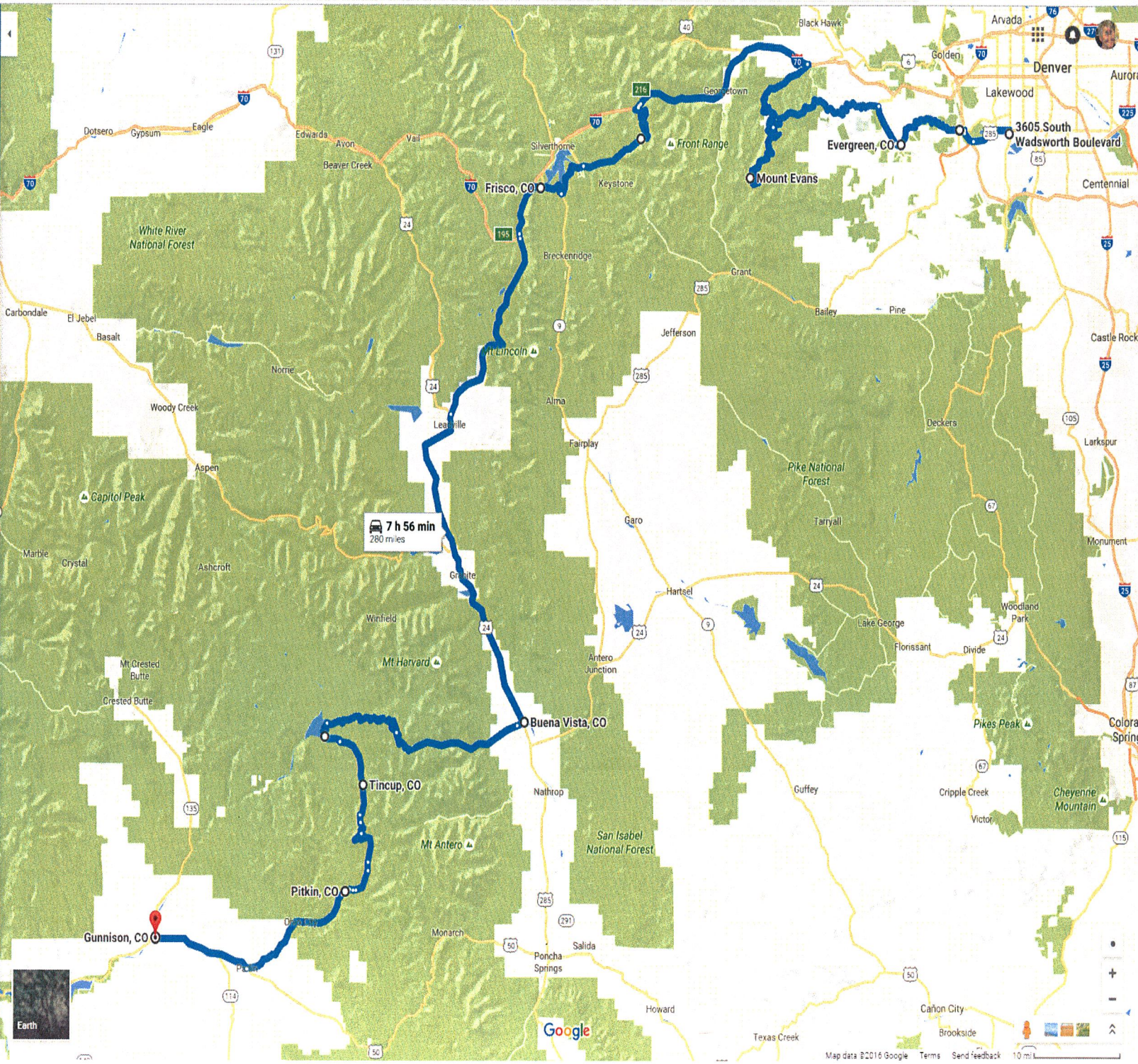
Map	Day	From - To	Distance	Pavement	Duration	Description
1	1	Lakewood - Gunnison	280	Offroad	7h 54m	Dual Sport Route
2	1	Lakewood - Gunnison	270	Some Off	7h 51m	Guanella Pass Adventure
3	1	Lakewood - Gunnison	262	Road	6h 28m	Guanella Pass Paved
4	1	Lakewood - Gunnison	251	Offroad		Dual Sport Route Without Mt Evans
5	1	Lakewood - Gunnison	277	Road		All Road
6	2	Gunnison - Durango	143	Offroad	5h 29m	Cinnamon Pass shortcut
7	2	Gunnison - Durango	230	Road	4h 49m	Road Route
8	2	Gunnison - Durango	149	Offroad	5h 29m	Engineer Pass shortcut
9	3	Durango - Ouray	96	Offroad	4h 41m	Adventure Route
10	3	Durango - Ouray	70	Road	1h 41m	Fast Short Route
11	3	Durango - Ouray	161	Road	3h 16m	Long Road Route
12	4	Ouray Free Day	260	Offroad	7h 58m	Free Day Scenic Ride (Offroad)
13	4	Ouray Free Day	255	Road	5h 30m	Free Day Scenic Ride (Road)
14	5	Ouray - Grand Junction	175	Road	3h 38m	Gateway Auto Museum Tour
15	5	Grand Junction	45	Road	1h 29m	National Monument Loop (optional)
16	5	Ouray - Grand Junction	310	Road	6h 4m	Long Road Ride
17	6	Grand Junction - Mexican Hat	208	Offroad		Adventure Route
18	6	Grand Junction - Mexican Hat	264	Road	5h	Scenic Route
19	6	Grand Junction - Mexican Hat	238	Road	3h 45m	Fast Slab
20	7	Free Day Mexican Hat				
21	8	Mexican Hat - Page	142	Road	2h 20m	Short Route
22	9	Page-Hurricane	251	Road	4h 46m	North Rim
23	10	Hurricane - Torrey	215	Road	4h 36m	Scenic Route
24	10	Hurricane - Torrey	264	Road	5h 46m	Long Scenic Route
25	11	Torrey - Moab	156	Road	2h 34m	Fast Route
26	11	Torrey - Moab	248	Road	4h 20m	Long Scenic Route
27	12	Moab - Glenwood Springs	232	Offroad	5h 38m	Offroad Shortcut
28	12	Moab - Glenwood Springs	275	Road	5h 37m	Long Scenic Route
29	12	Moab - Glenwood Springs	189	Road	3h 14m	Fast Slab Route
30	12	Moab - Glenwood Springs	243	Road	4h 55m	Medium Route
31	12	Moab - Glenwood Springs	266	Offroad	7h 8m	Long Offroad
32	13	Glenwood Springs - Estes Park	174	Road	5h 8m	Scenic Road Route

- 3605 South Wadsworth Boulevard, Lakewood, CO
 - Morrison, CO
 - Evergreen, CO
 - Mount Evans, Mount Evans Road, Evergreen, CO
 - Frisco, CO
 - Buena Vista, CO
 - Tincup, CO
 - Pitkin, CO
 - Gunnison, CO
- OPTIONS

Send directions to your phone

via US-285 S 7 h 56 min 280 miles
7 h 56 min without traffic 280 miles

DETAILS



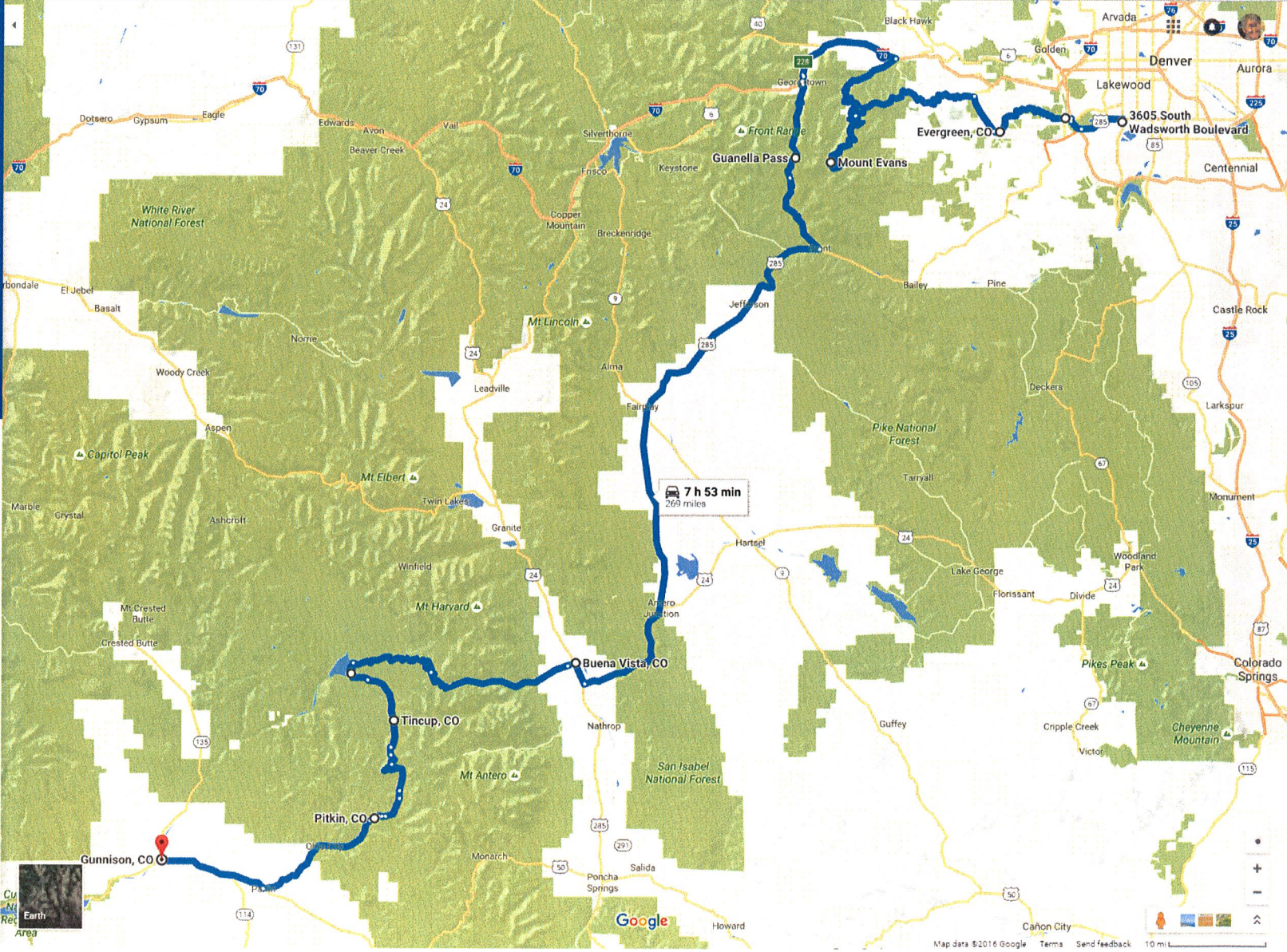
MAP 1

- 3605 South Wadsworth Boulevard, Lakewood, CO
 - Morrison, CO
 - Evergreen, CO
 - Mount Evans, Mount Evans Road, Evergreen, CO
 - Guanella Pass
 - Buena Vista, CO
 - Tincup, CO
 - Pitkin, CO
 - Gunnison, CO
- OPTIONS

Send directions to your phone

via US-285 S 7 h 53 min
7 h 53 min without traffic 269 miles

DETAILS



Navigation icons: Car, Public Transit, Walking, Bicycling, Street View, etc.

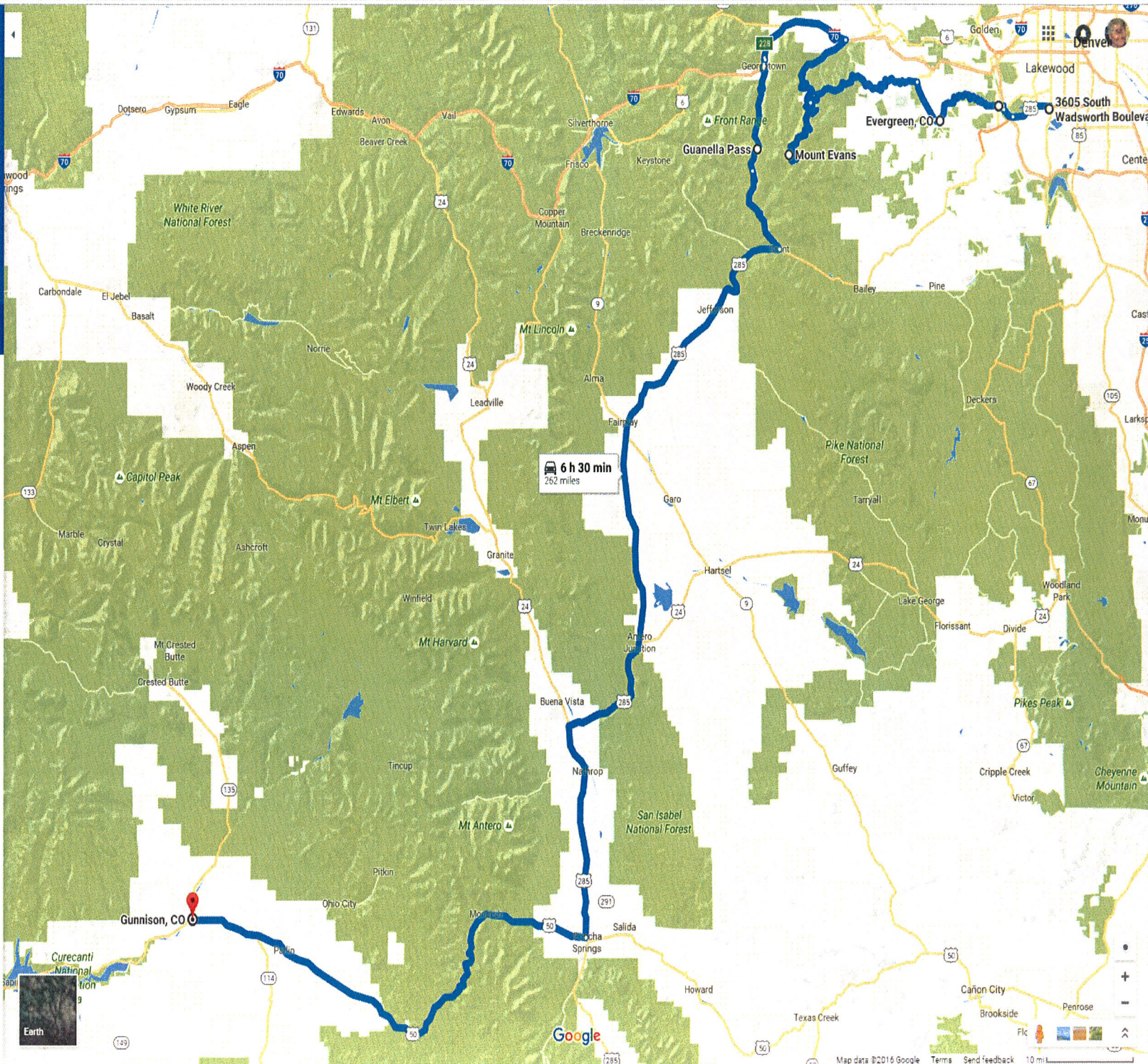
- 3605 South Wadsworth Boulevard, Lakewood, CO
- Morrison, CO
- Evergreen, CO
- Mount Evans, Mount Evans Road, Evergreen, CO
- Guanella Pass
- Gunnison, CO

OPTIONS

Send directions to your phone

via US-285 S 6 h 30 min 262 miles
6 h 30 min without traffic 262 miles

DETAILS

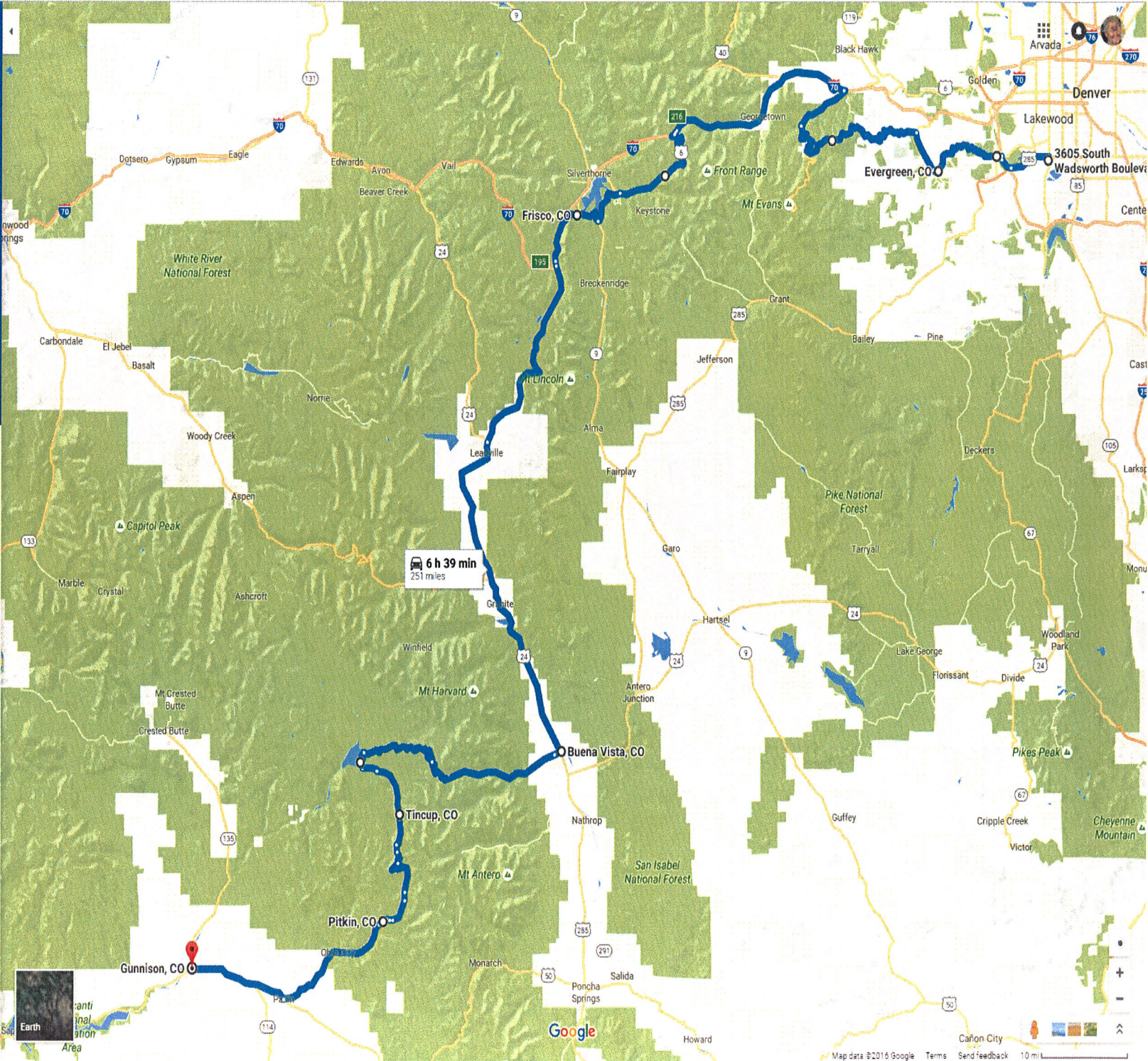


MAP 3

- 3605 South Wadsworth Boulevard, Lakewood, CO
 - Morrison, CO
 - Evergreen, CO
 - Frisco, CO
 - Buena Vista, CO
 - Tincup, CO
 - Pitkin, CO
 - Gunnison, CO
- OPTIONS

via US-285 S 6 h 39 min 251 miles
6 h 39 min without traffic

DETAILS



MAP 4

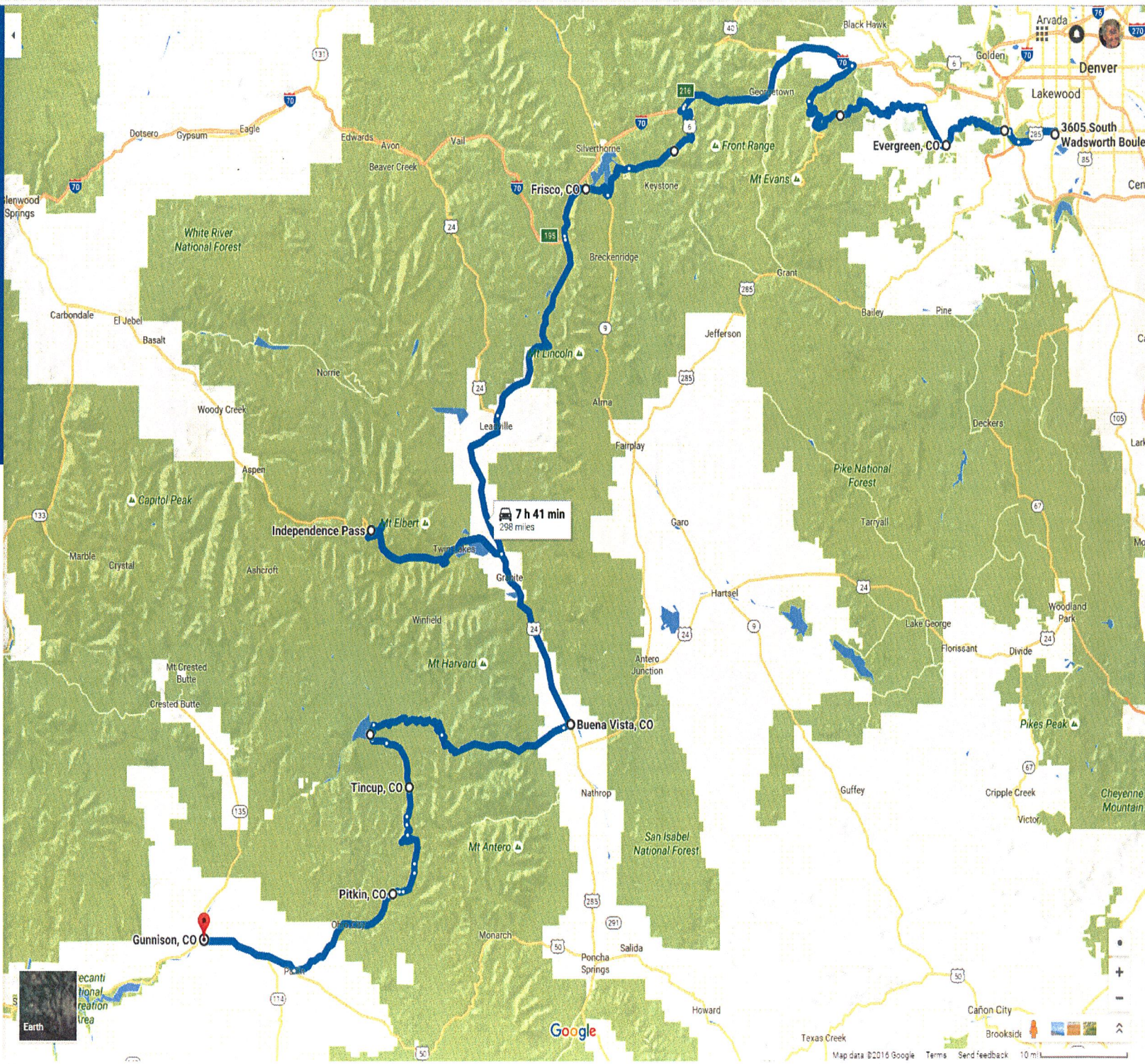
- 3605 South Wadsworth Boulevard, La...
- Morrison, CO
- Evergreen, CO
- Frisco, CO
- Independence Pass, Twin Lakes to Asp...
- Buena Vista, CO
- Tincup, CO
- Pitkin, CO
- Gunnison, CO

Send directions to your phone

via US-285 S 7 h 41 min 298 miles

7 h 41 min 298 miles

DETAILS



MAP 4 + INDEPENDENCE PASS



ecanti
lional
reaction
tree

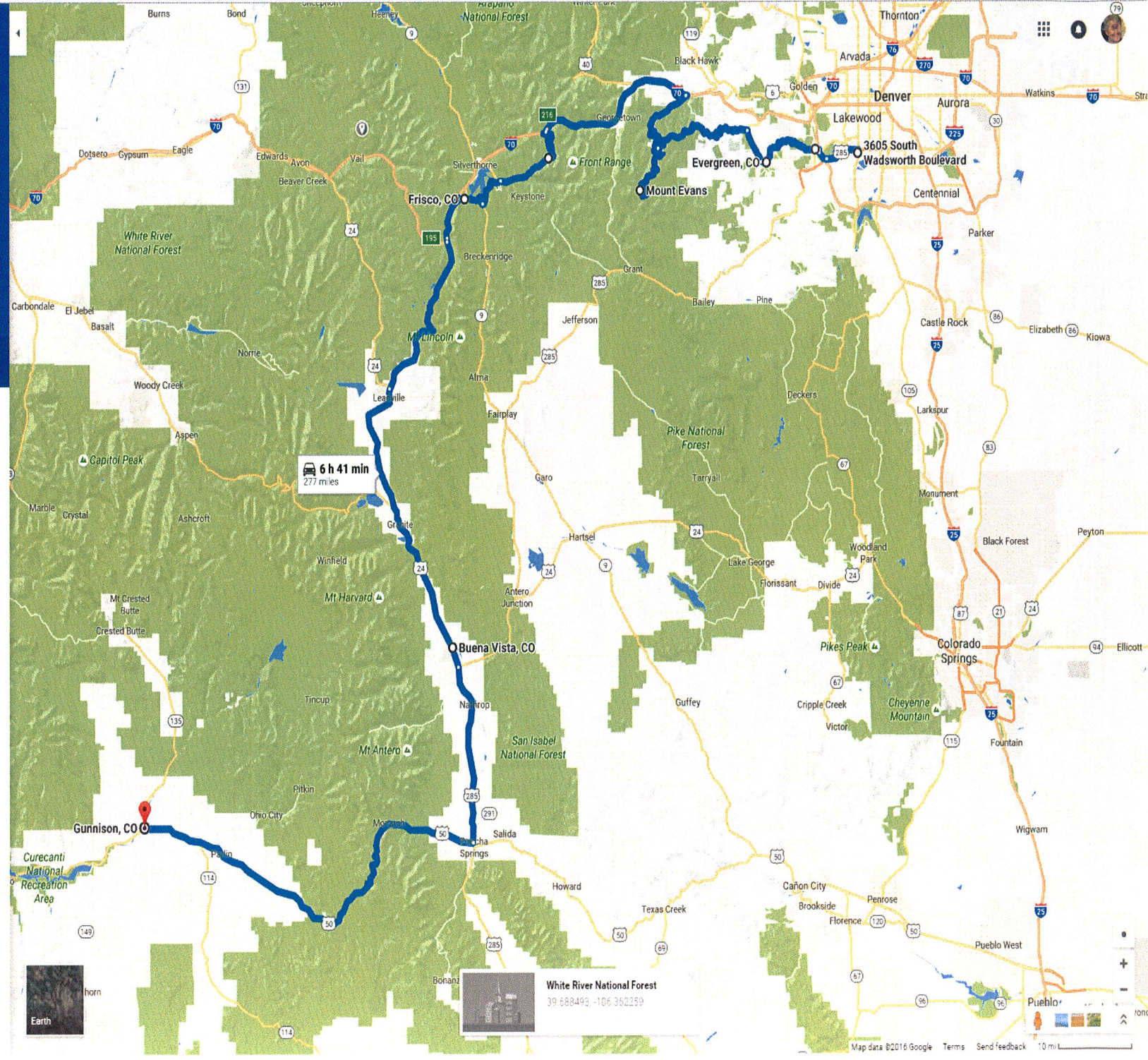
- 3605 South Wadsworth Boulevard, Lakewood, CO
- Morrison, CO
- Evergreen, CO
- Mount Evans, Mount Evans Road, Evergreen, CO
- Frisco, CO
- Buena Vista, CO
- Gunnison, CO

Send directions to your phone

via US-285 S 6 h 41 min 277 miles

6 h 41 min without traffic 277 miles

DETAILS



MAP 5

Navigation icons: Home, Directions, Car, Bus, Walking, Bicycling, Airplane, Close

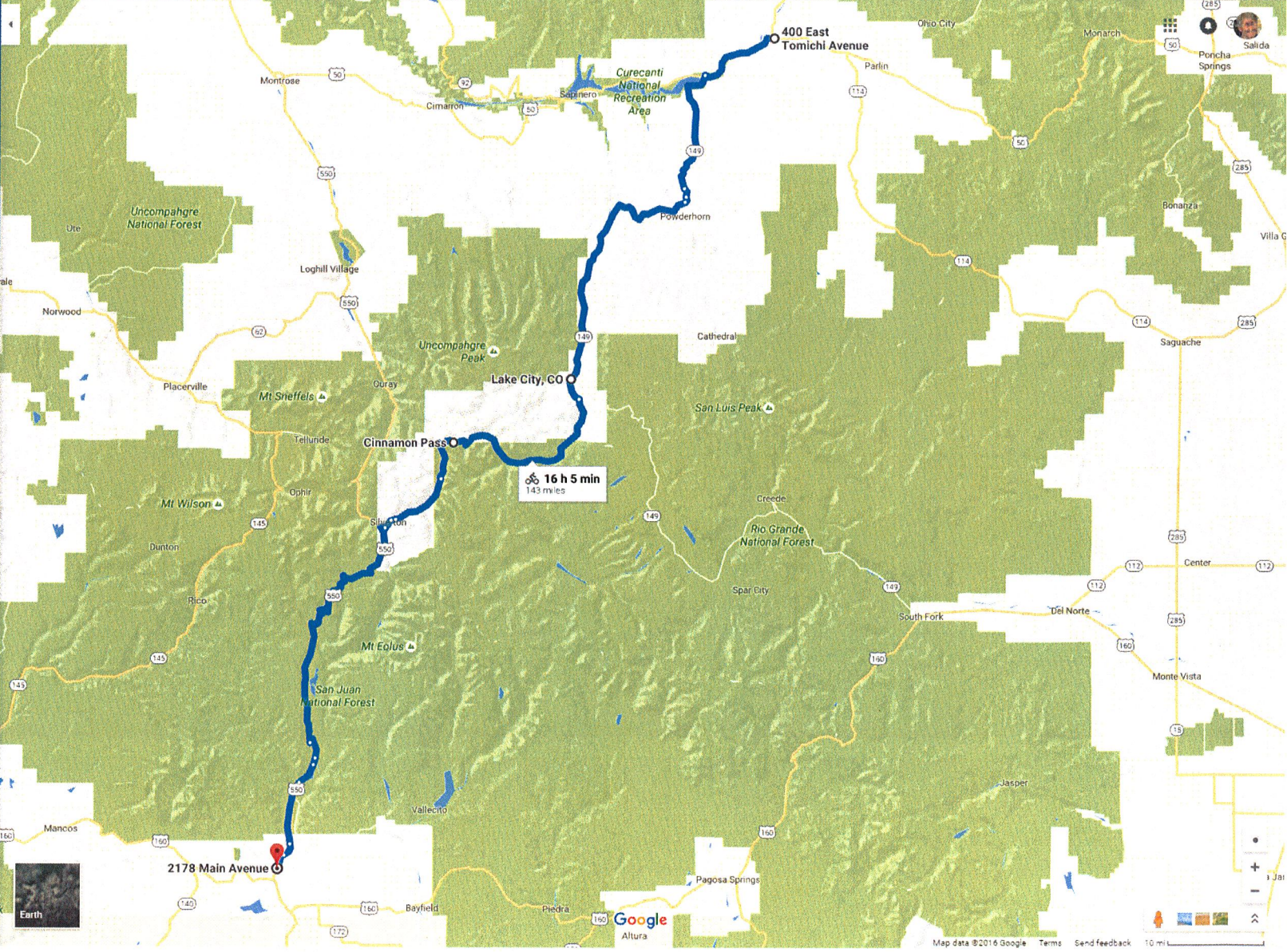
- 400 East Tomichi Avenue, Gunnison, CO
- Lake City, CO
- Cinnamon Pass
- 2178 Main Avenue, Durango, CO 81301

OPTIONS

Send directions to your phone

via CO-149 and CO-149 S 16 h 5 min
↑ 10,820 ft ↓ 11,962 ft
143 miles
12,621 ft

DETAILS



MAP 6

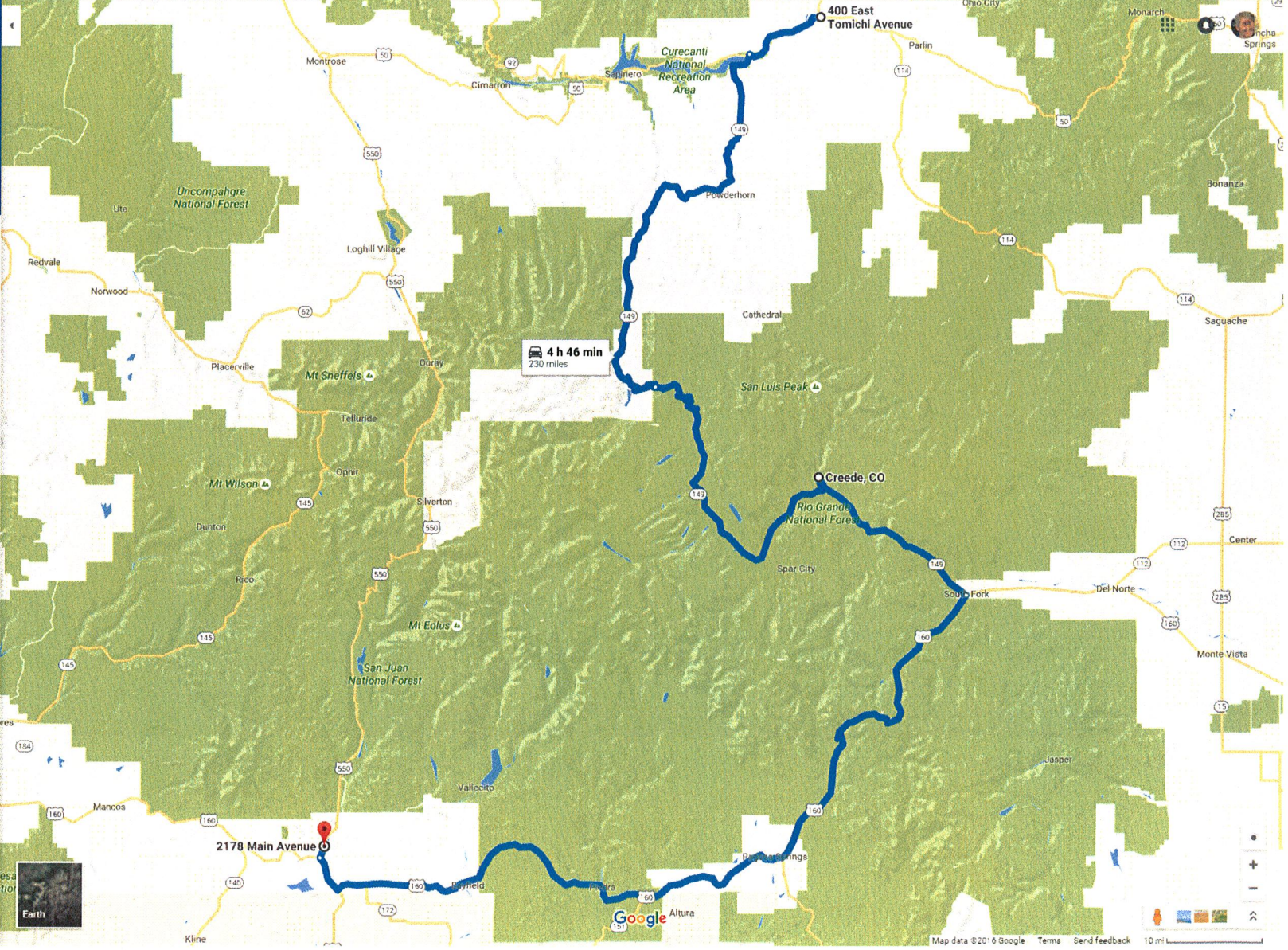
400 East Tomichi Avenue, Gunnison, CO
Creede, CO
2178 Main Avenue, Durango, CO 81301

OPTIONS

Send directions to your phone

via CO-149
4 h 46 min without traffic
230 miles

DETAILS



MAP 7

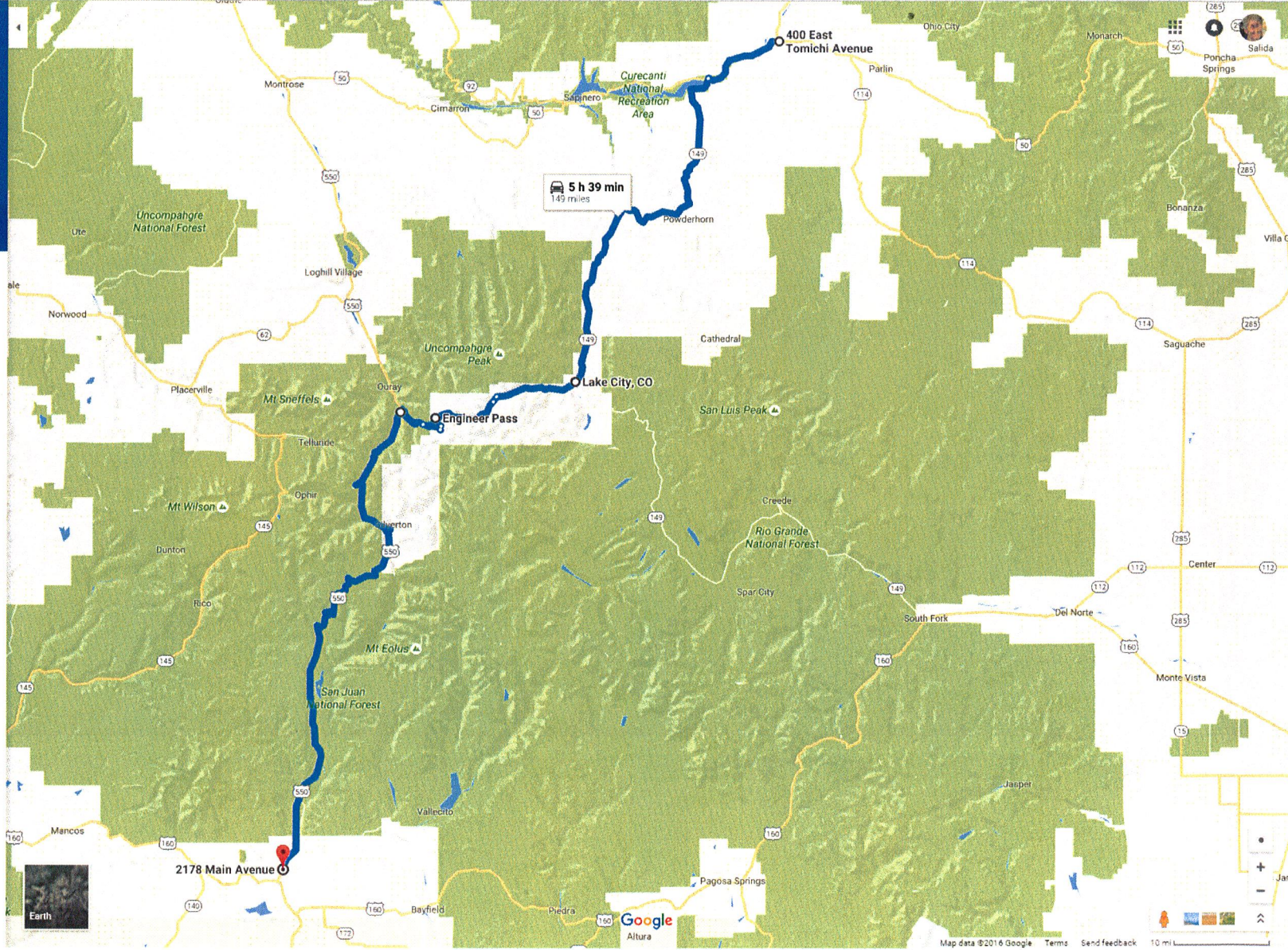
400 East Tomichi Avenue, Gunnison, CO
Lake City, CO
Engineer Pass
2178 Main Avenue, Durango, CO 81301

OPTIONS

Send directions to your phone

via CO-149
5 h 39 min without traffic
149 miles

DETAILS



2178 Main Avenue, Durango, CO 81301

Telluride, CO

Camp Bird, CO

201 6th Avenue, Ouray, CO 81427

OPTIONS

Send directions to your phone

via US-550 N and CO-145 N 4 h 37 min
4 h 37 min without traffic 95.5 miles

DETAILS



MAP 9

2178 Main Avenue, Durango, CO 81301

201 6th Avenue, Ouray, CO 81427

Leave now

OPTIONS

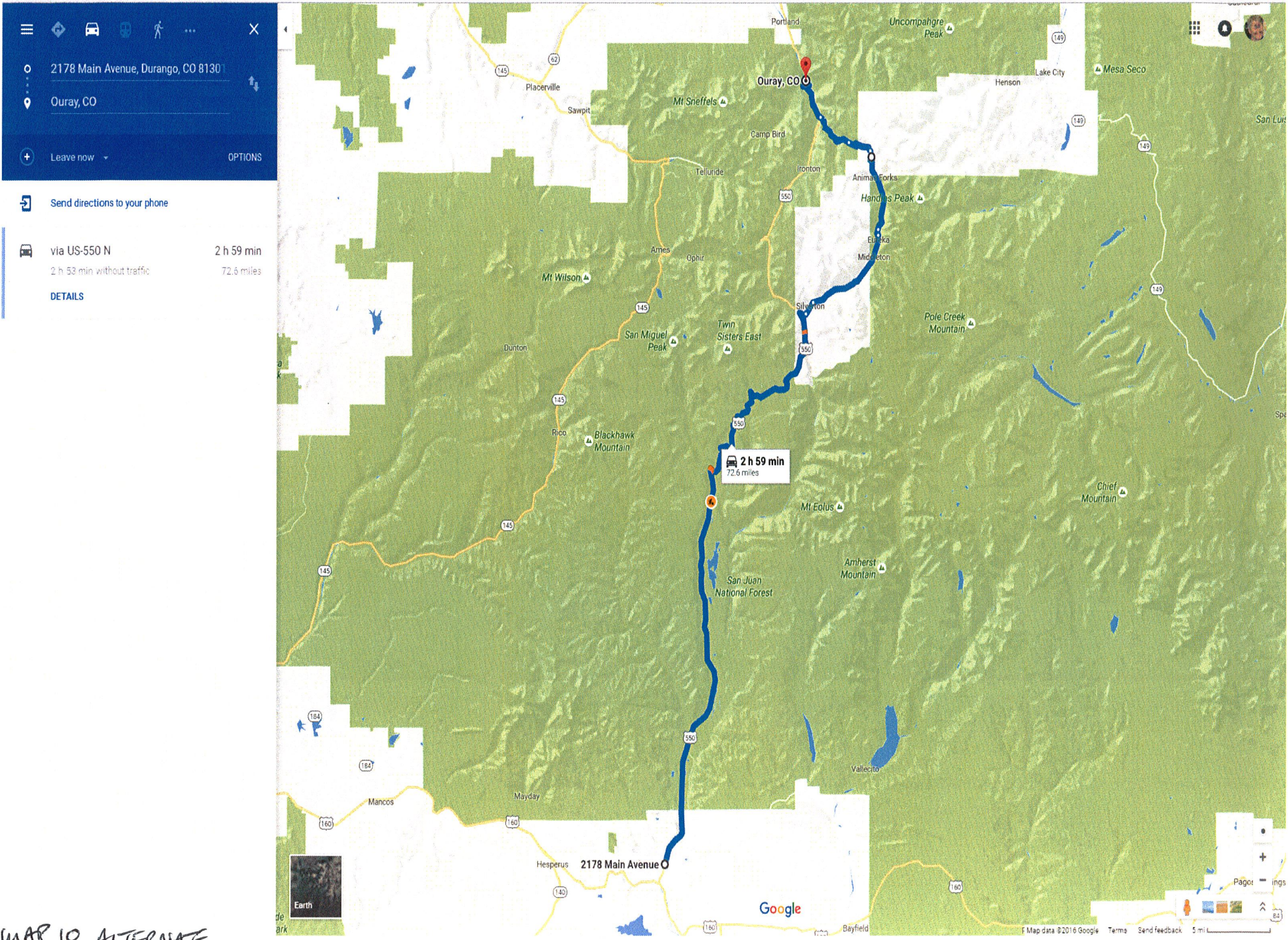
Send directions to your phone

via US-550 N and US-550
1 h 34 min without traffic

1 h 46 min
59.7 miles

DETAILS





2178 Main Avenue, Durango, CO 81301

Ouray, CO

Leave now

OPTIONS

Send directions to your phone

via US-550 N **2 h 59 min**
2 h 53 min without traffic 72.6 miles

DETAILS

2 h 59 min
72.6 miles

MAP 10 ALTERNATE



Google

2178 Main Avenue, Durango, CO 81301

Telluride, CO

201 6th Avenue, Ouray, CO 81427

OPTIONS

Send directions to your phone

via CO-145 N 3 h 17 min 161 miles

3 h 17 min without traffic 161 miles

DETAILS



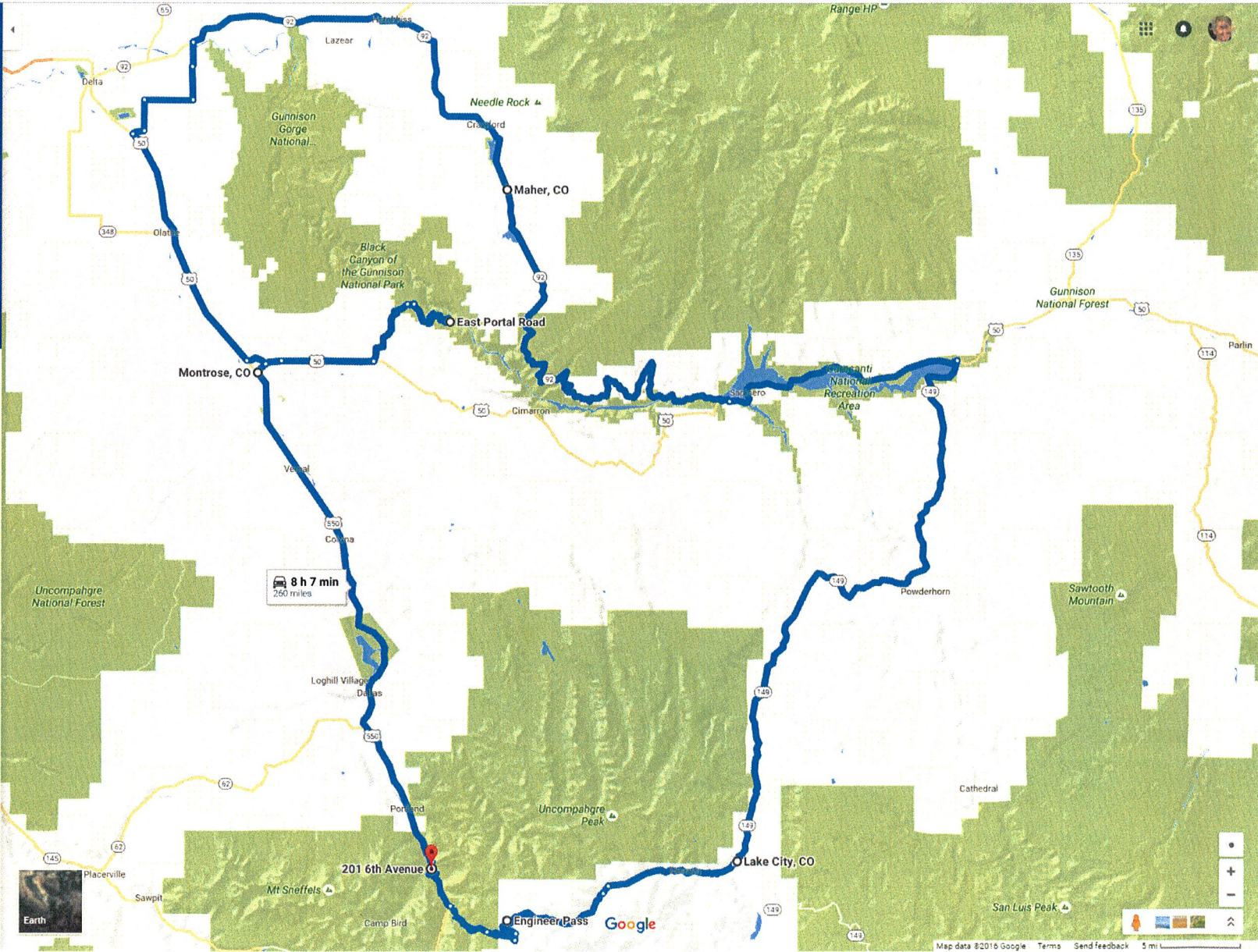
MAP 11

- 201 6th Avenue, Ouray, CO 81427
- Montrose, CO
- East Portal Road, Montrose, CO 81401
- Maher, CO
- Lake City, CO
- Engineer Pass
- 201 6th Avenue, Ouray, CO 81427

Send directions to your phone

via US-550 N 8 h 7 min 260 miles
8 h 7 min without traffic

DETAILS



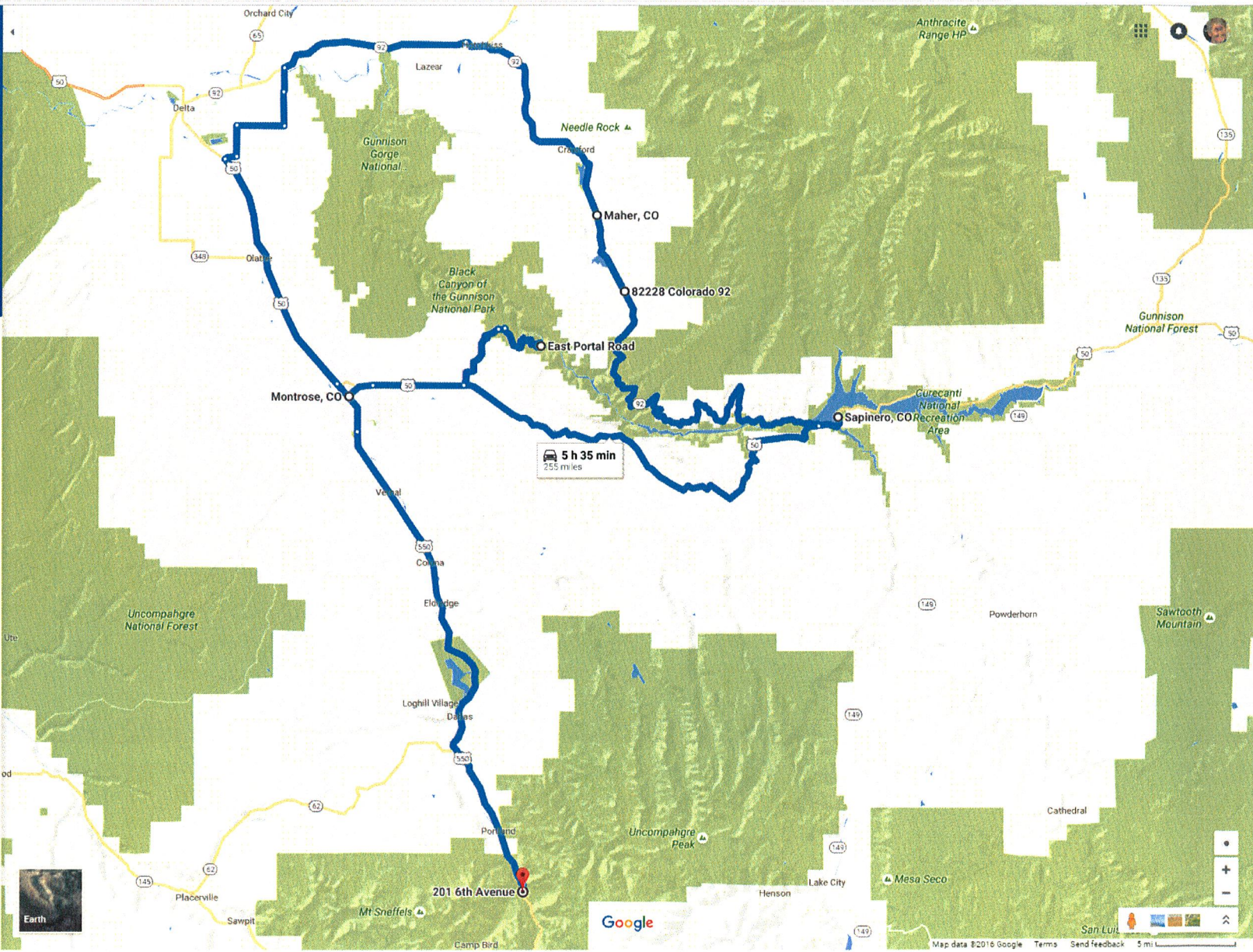
MAP 12

- 82228 Colorado 92, Crawford, CO 81415
 - Montrose, CO
 - East Portal Road, Montrose, CO 81401
 - Sapinero, CO
 - Maher, CO
 - 201 6th Avenue, Ouray, CO 81427
- OPTIONS

Send directions to your phone

via CO-92 W/Hwy 92 and US-50 E 5 h 35 min
5 h 35 min without traffic 255 miles

DETAILS



MAP 13

201 6th Avenue, Ouray, CO 81427

Gateway Auto Museum, 43224 Colora

708 Horizon Drive, Grand Junction, CO

OPTIONS

Send directions to your phone

via CO-145 N and CO-141 N 3 h 37 min
3 h 37 min without traffic 175 miles

DETAILS



MAP 14

Navigation icons: Car, Bus, Walking, etc.

- 708 Horizon Drive, Grand Junction, CO
- Rimrock Drive, Grand Junction, CO 81506
- 2210-2230 Glade Park Road, Grand Junction, CO
- 708 Horizon Drive, Grand Junction, CO

OPTIONS

Send directions to your phone

via I-70 W and Rimrock Dr 1 h 29 min
45.1 miles
This route has tolls.

DETAILS



MAP 15

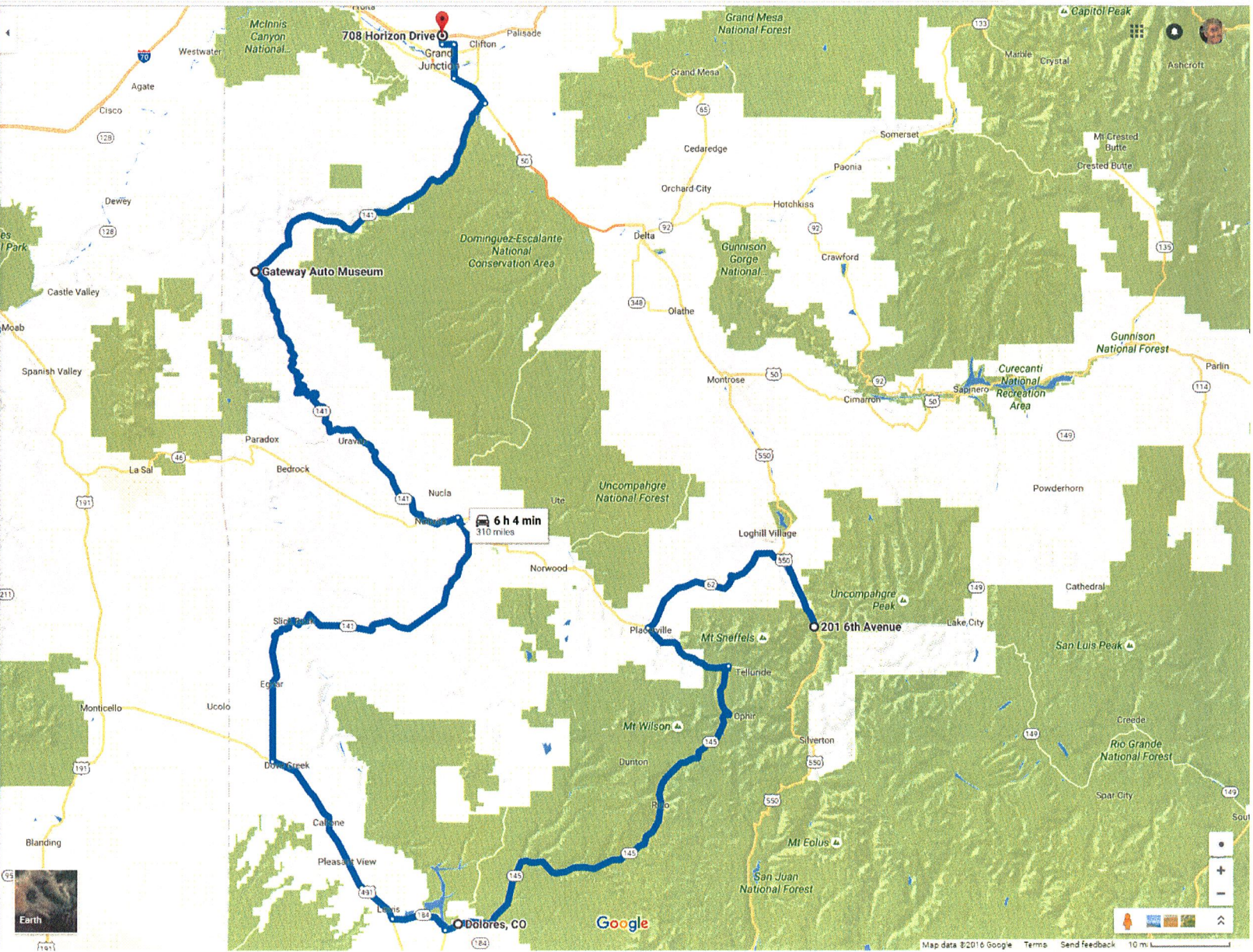
201 6th Avenue, Ouray, CO 81427
Dolores, CO
Gateway Auto Museum, 43224 Colora...
708 Horizon Drive, Grand Junction, CO

OPTIONS

Send directions to your phone

via CO-145 S 6 h 4 min 310 miles
6 h 4 min without traffic 310 miles

DETAILS



MAP 16

708 Horizon Drive, Grand Junction, CO
Gateway, CO
Mexican Hat, UT

OPTIONS

via CO-141 S
↑ 13,238 ft ↓ 13,948 ft
20 h 28 min
208 miles
3,052 ft



DETAILS



MAP 17

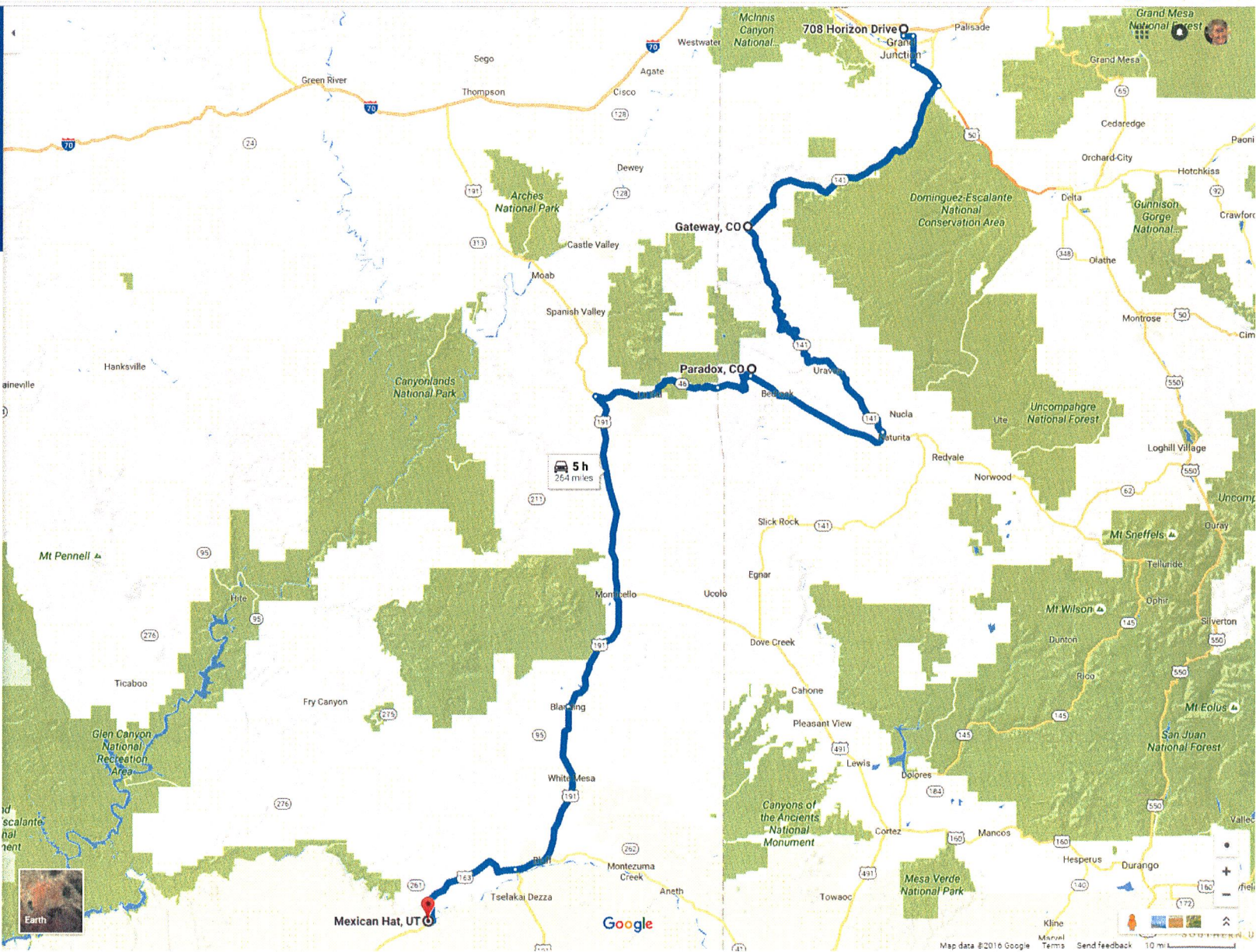
708 Horizon Drive, Grand Junction, CO
Gateway, CO
Paradox, CO
Mexican Hat, UT

OPTIONS

Send directions to your phone

via CO-141 S
5 h
264 miles
5 h without traffic

DETAILS



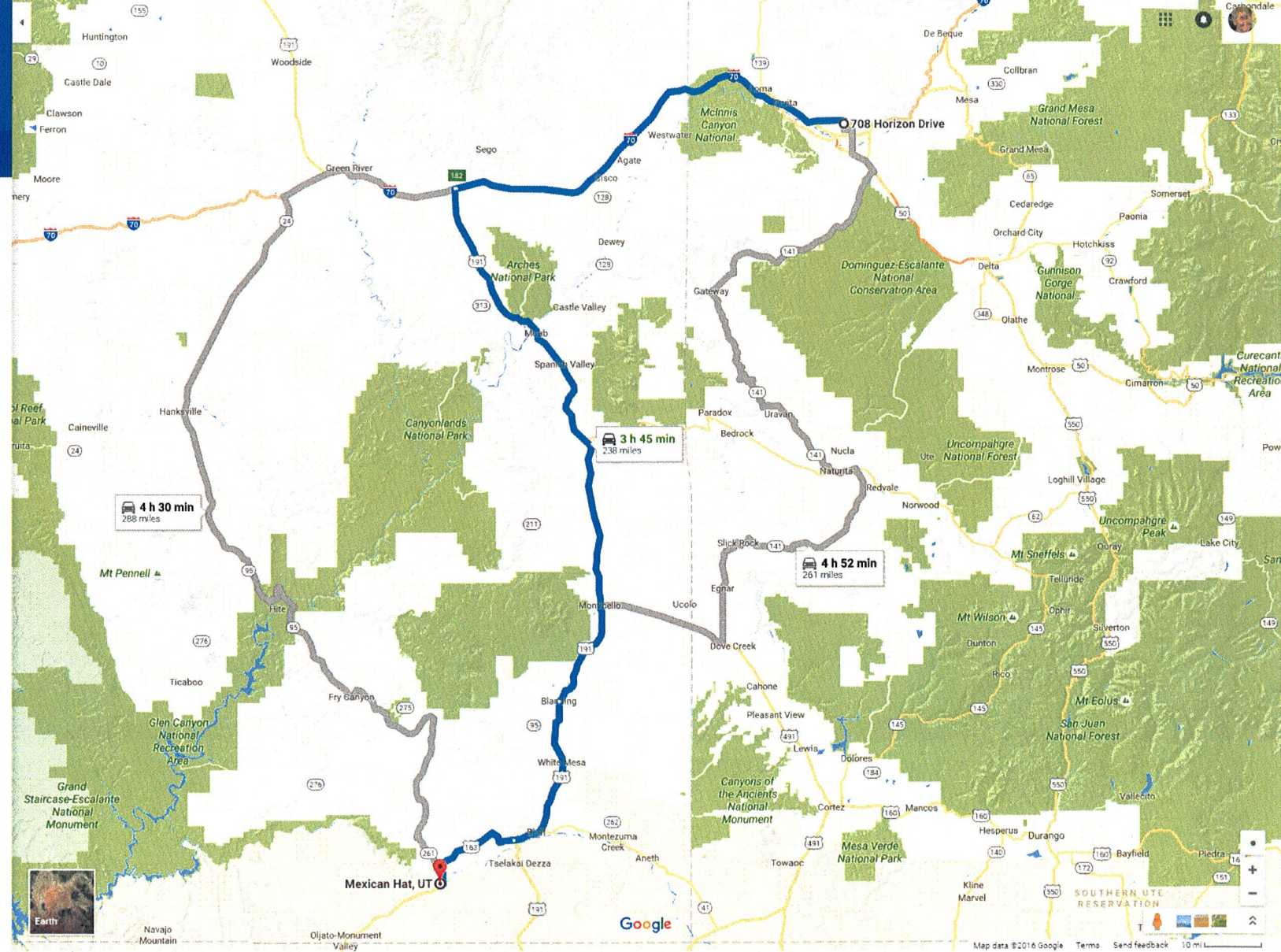
MAP 18

708 Horizon Drive, Grand Junction, CO
Mexican Hat, UT

Leave now

OPTIONS

- Send directions to your phone
- via I-70 W and US-191 S
3 h 45 min
238 miles
- via I-70 W and UT-95 S
4 h 30 min
288 miles
- via CO-141 S
4 h 52 min
261 miles



MAP 19

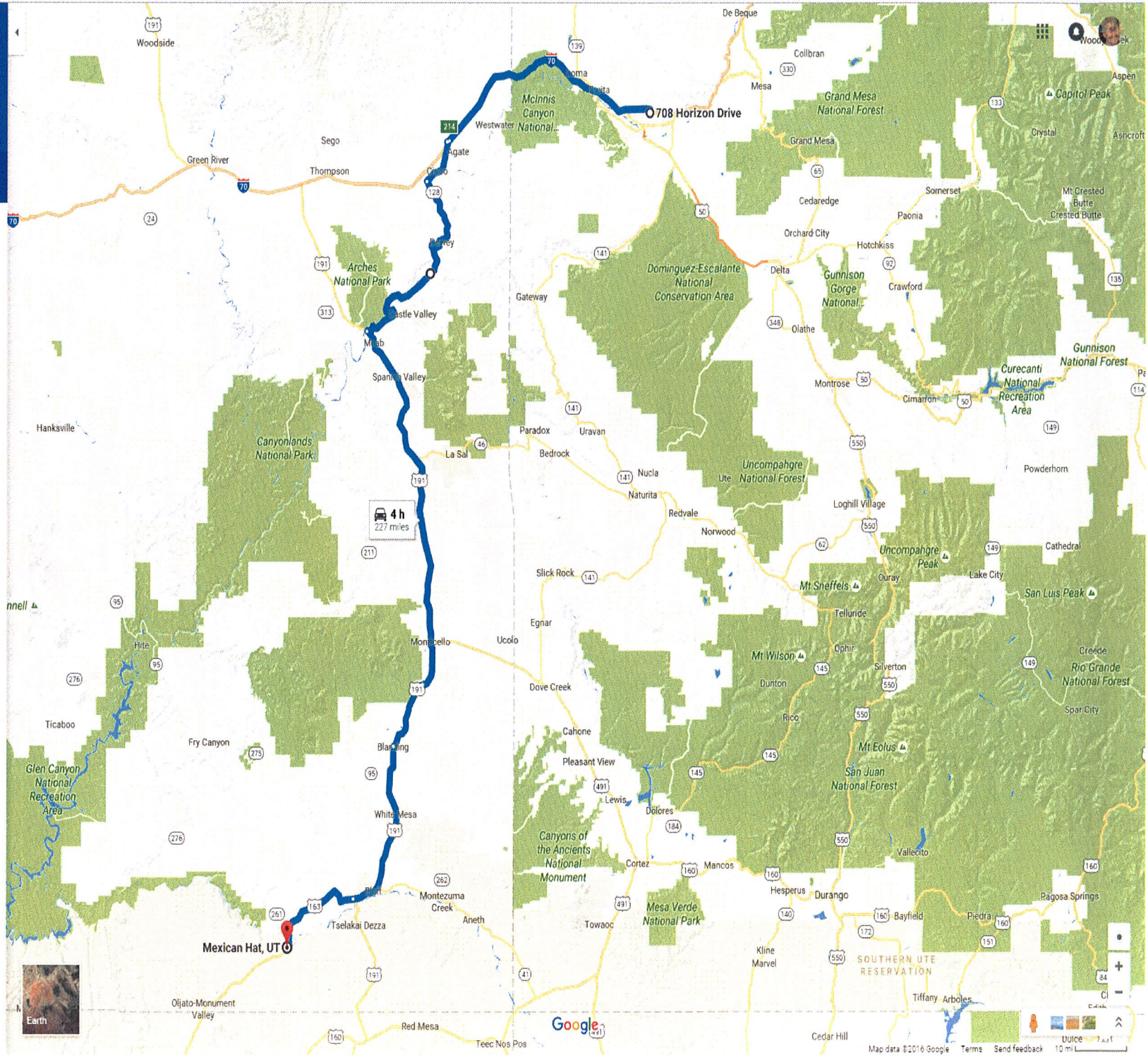
708 Horizon Drive, Grand Junction, CO
Mexican Hat, UT

Leave now

Send directions to your phone

via US-191 S 4 h
3 h 49 min without traffic 227 miles

DETAILS



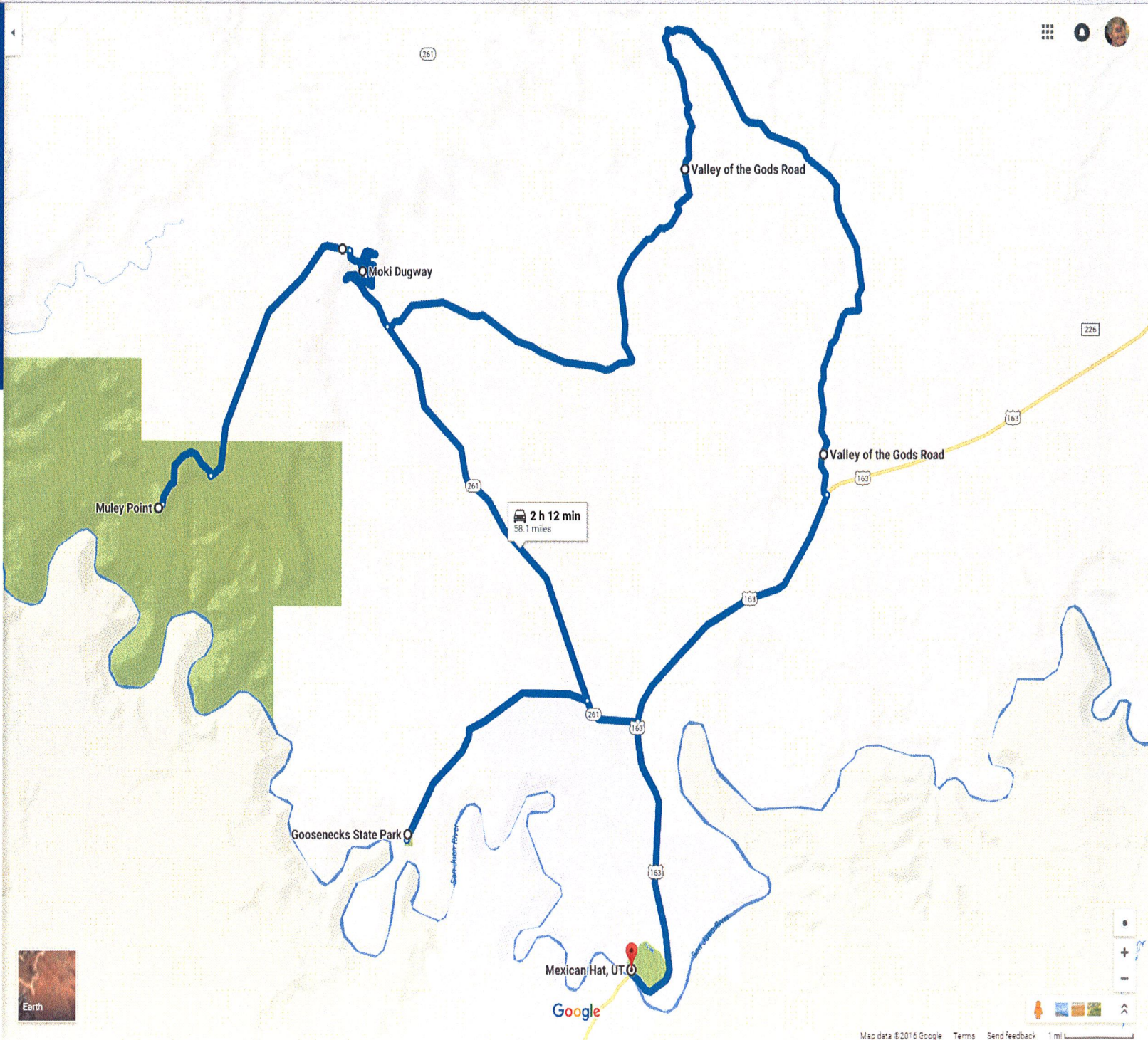
MAP 19 Shortcut

- Mexican Hat, UT
 - Goosenecks State Park, Utah 316, Mex
 - Moki Dugway, Utah 261, Mexican Hat,
 - Muley Point
 - Valley of the Gods Road, Mexican Hat,
 - Valley of the Gods Road, Mexican Hat,
 - Mexican Hat, UT
- OPTIONS

Send directions to your phone

via US-163 N and UT-316 W 2 h 12 min
2 h 12 min without traffic 58.1 miles

DETAILS



MAP 20

https://www.google.com/maps/dir/Mexican+Hat,+UT+Page,+AZ/@36.5949136,-110.925398,10z/data=!4m14!4m13!1m5!1m1!1s0x8737382cd502c16f0xd834a571b3dc7f4d12m2!1d-109.8670664!2d37.151946

Mexican Hat, UT
Page, AZ

Leave now

Send directions to your phone

via US-163 S and AZ-98 W
2 h 20 min
142 miles
2 h 9 min without traffic

DETAILS

via US-160 W
3 h 4 min
189 miles
2 h 51 min without traffic

Map labels: Wahweap, Lake Powell, Lechee, Marble Canyon, Tropic Springs, Willow Springs, Moenave, Tuba City, Rare Metals, Moenkopi, Shonto, Kayenta, Ojato Monument, Dennehotso, Rock Po, Rough Rock, Blue Gap, Pinon, Navajo Mountain, Chilchinbito.

Map data ©2014 Google Terms Send feedback 5 mi

MAP 21

Navigation icons: Home, Car, Public Transit, Pedestrian, etc.

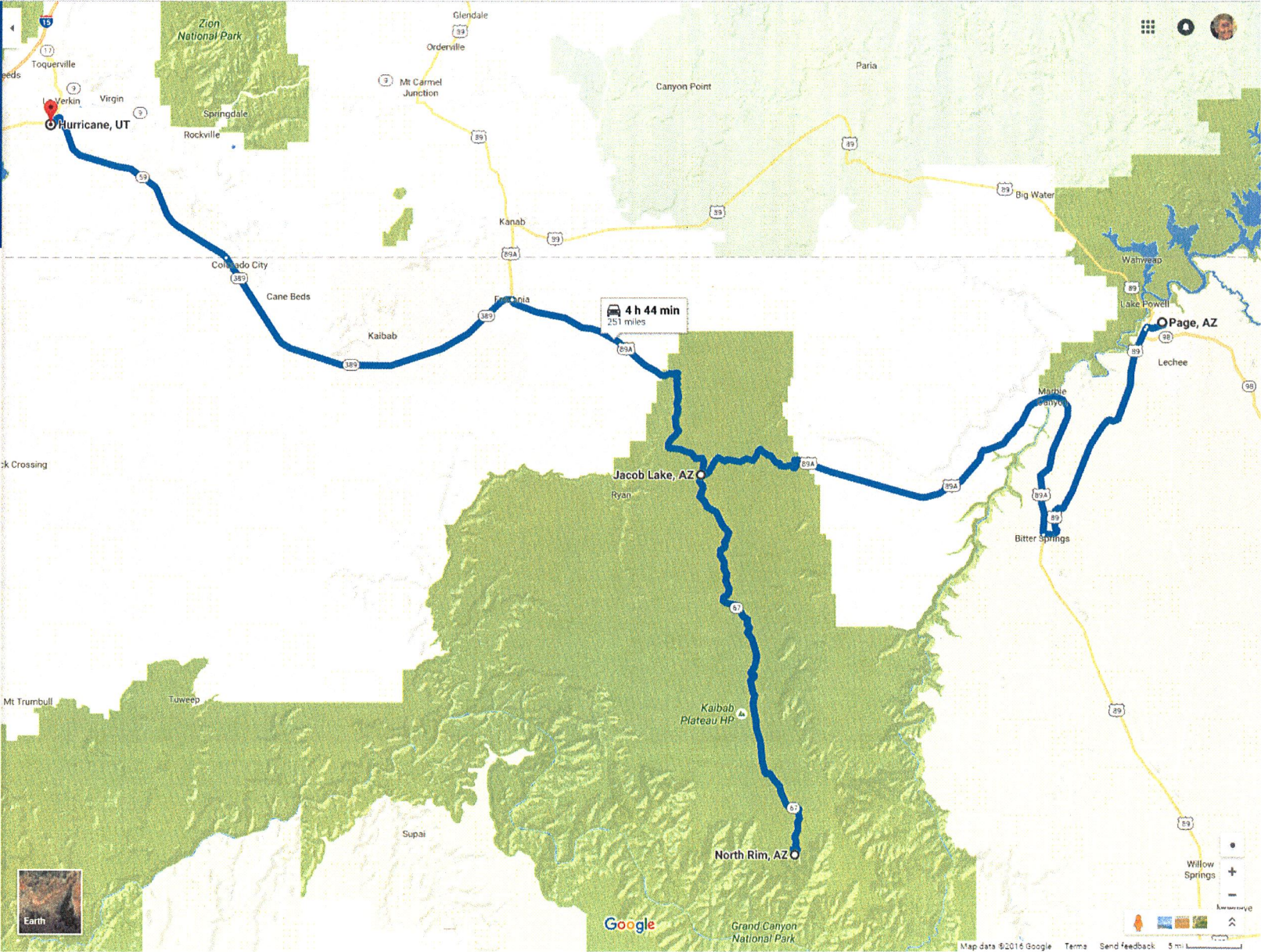
- Page, AZ
- Jacob Lake, AZ
- North Rim, AZ
- Hurricane, UT

OPTIONS

Send directions to your phone

via US-89 and US-89A N
4 h 44 min without traffic
251 miles

DETAILS



MAP 22

Navigation icons: Home, Car, Pedestrian, etc.

- Hurricane, UT
- Glendale, UT
- Tropic, UT
- Escalante, UT
- Torrey, UT

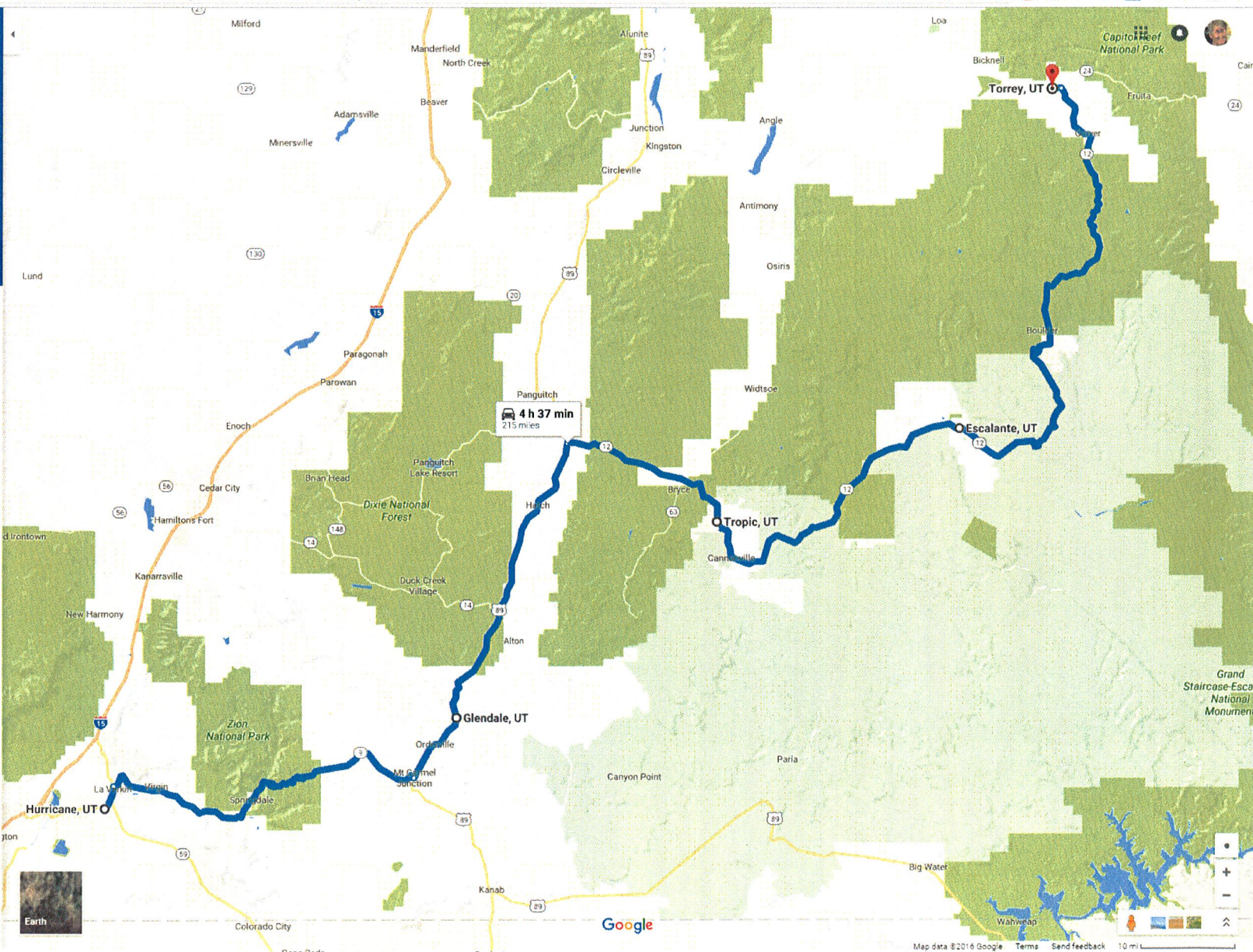
OPTIONS

Send directions to your phone

via UT-9 E 4 h 37 min 215 miles

4 h 37 min without traffic 215 miles

DETAILS



MAP 23

Navigation icons: Home, Car, Pedestrian, etc.

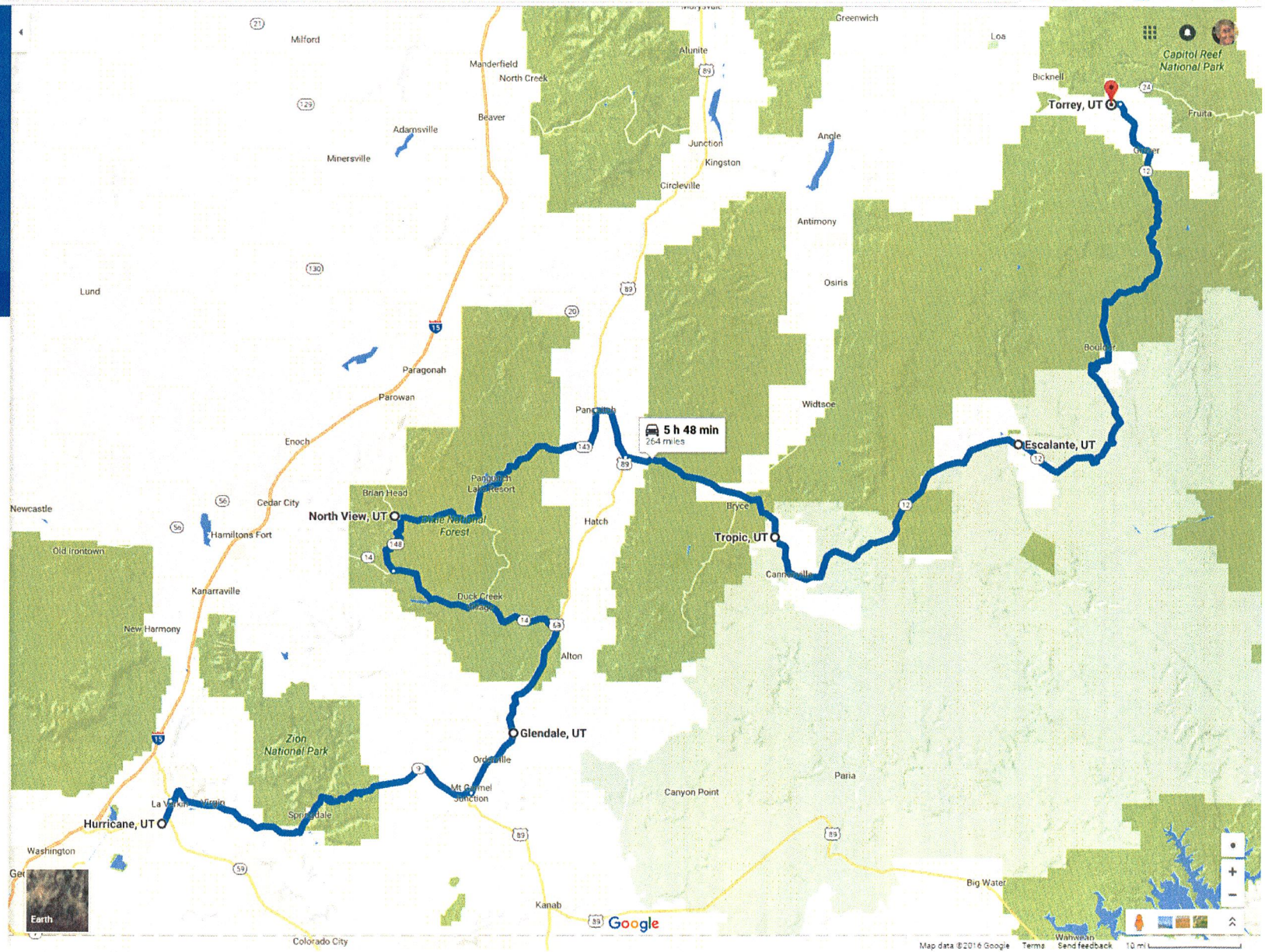
- Hurricane, UT
- Glendale, UT
- North View, UT
- Tropic, UT
- Escalante, UT
- Torrey, UT

OPTIONS

Send directions to your phone

via UT-9 E 5 h 48 min 264 miles

DETAILS



MAP 24

Navigation icons: Home, Car, Public Transit, Walking, Bicycling, Street View, Layers, Full Screen, Print, Share, Location History, My Location

Torrey, UT

Moab, UT

Leave now

OPTIONS

Send directions to your phone

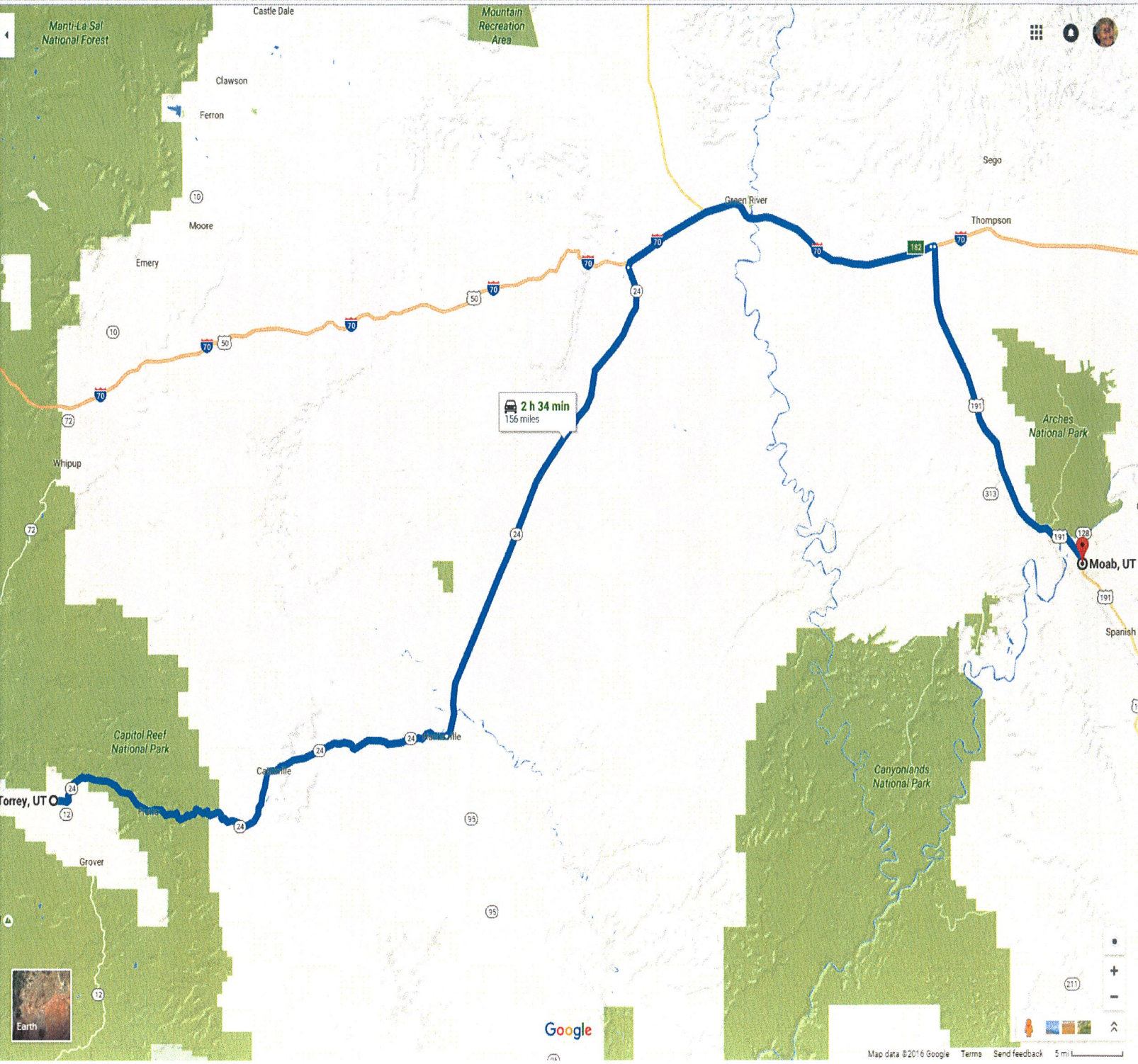
via UT-24 E

2 h 26 min without traffic

2 h 34 min

156 miles

DETAILS



MAP 25

Route Summary:
via UT-24 E and UT-95 S
4 h 19 min
248 miles

Locations on Route:
Torrey, UT
Fry Canyon, UT
Moab, UT

Geographic Labels:
Whipup
Bicknell
Grover
Boulder
Ticaboo
Hite
Spanish Valley
Castle Valley
Capitol Reef National Park
Canyonlands National Park
Arches National Park
Glen Canyon National Recreation Area
Grand Staircase-Escalante National Monument

Map Data: ©2016 Google

MAP 26

Navigation icons: Car, Bus, Walking, etc.

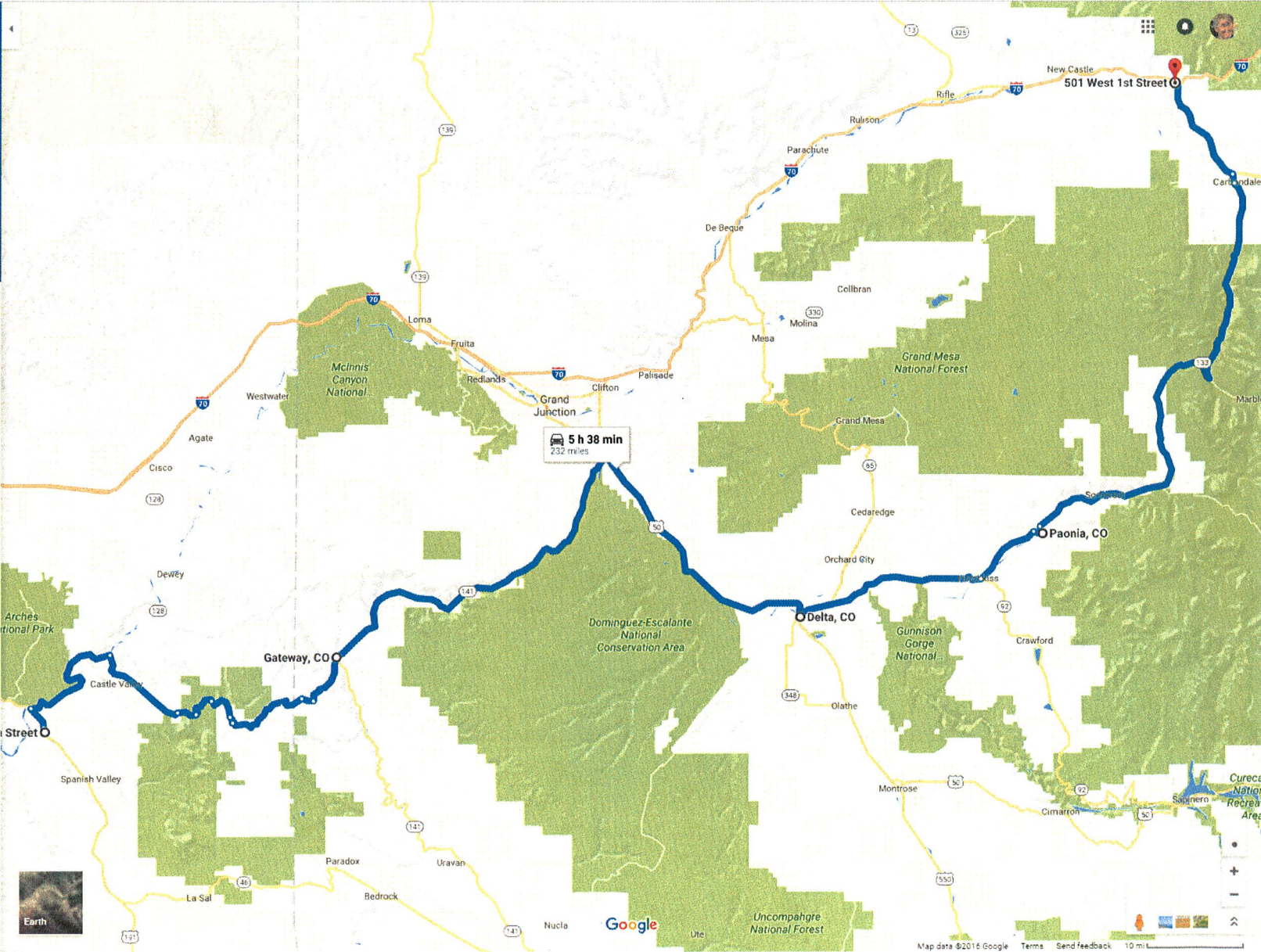
- 535 South Main Street, Moab, UT 84532
- Gateway, CO
- Delta, CO
- Paonia, CO
- 501 West 1st Street, Glenwood Springs, CO

OPTIONS

Send directions to your phone

via UT-128 E and Dolores Triangle Safari Rte 5 h 38 min
232 miles
5 h 33 min without traffic

DETAILS



MAD 27

Navigation icons: Home, Car, Bus, Pedestrian, etc.

- 535 South Main Street, Moab, UT 84532
- Dewey, UT
- Mesa, CO
- Paonia, CO
- 501 West 1st Street, Glenwood Springs, CO

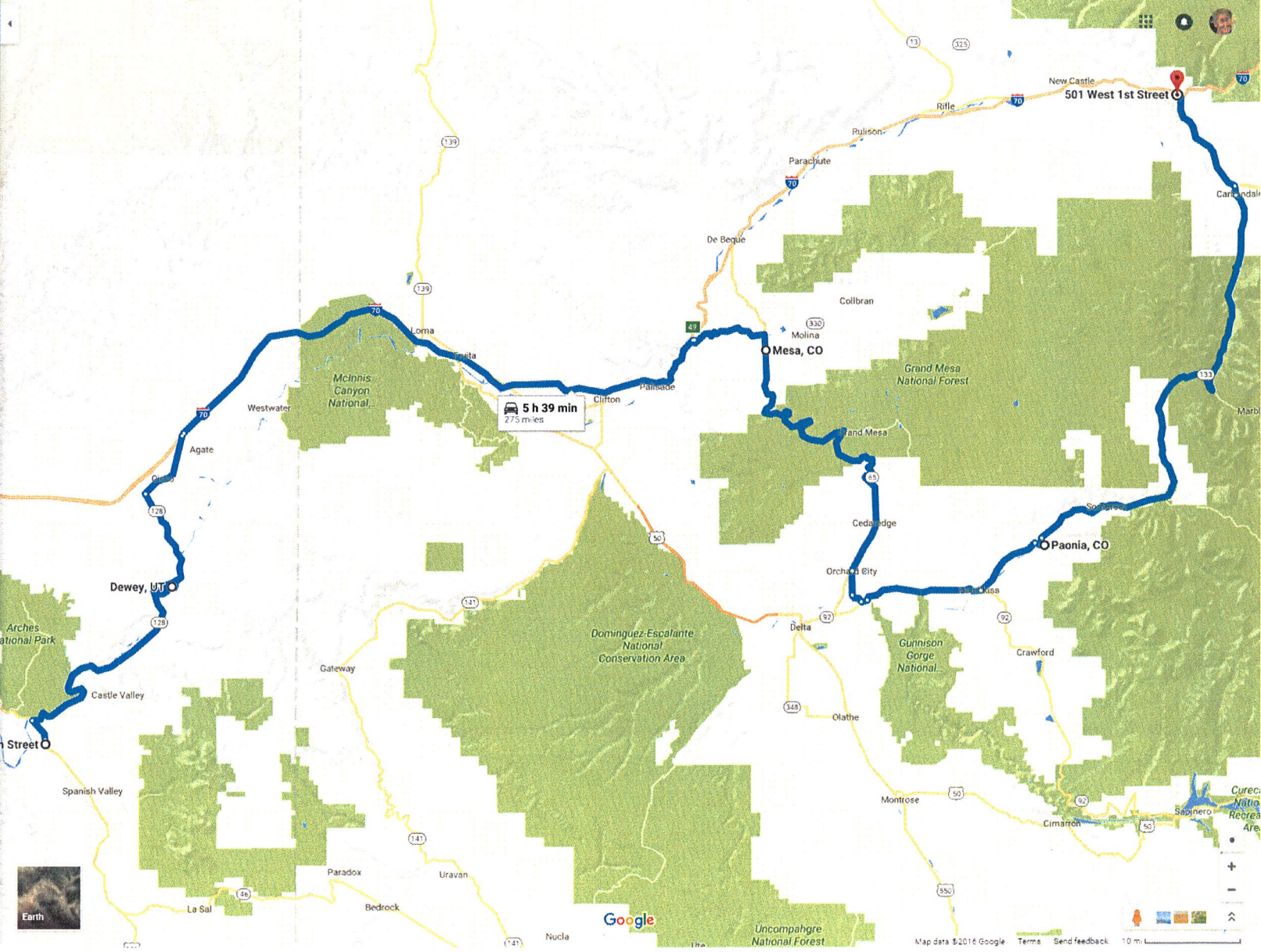
OPTIONS

Send directions to your phone

via UT-128 E 5 h 39 min 275 miles

5 h 39 min without traffic 275 miles

DETAILS



MAP 28

Navigation icons: Car, Bus, Walking, etc.

- 535 South Main Street, Moab, UT 84532
- Dewey, UT
- Delta, CO
- Paonia, CO
- 501 West 1st Street, Glenwood Springs, CO

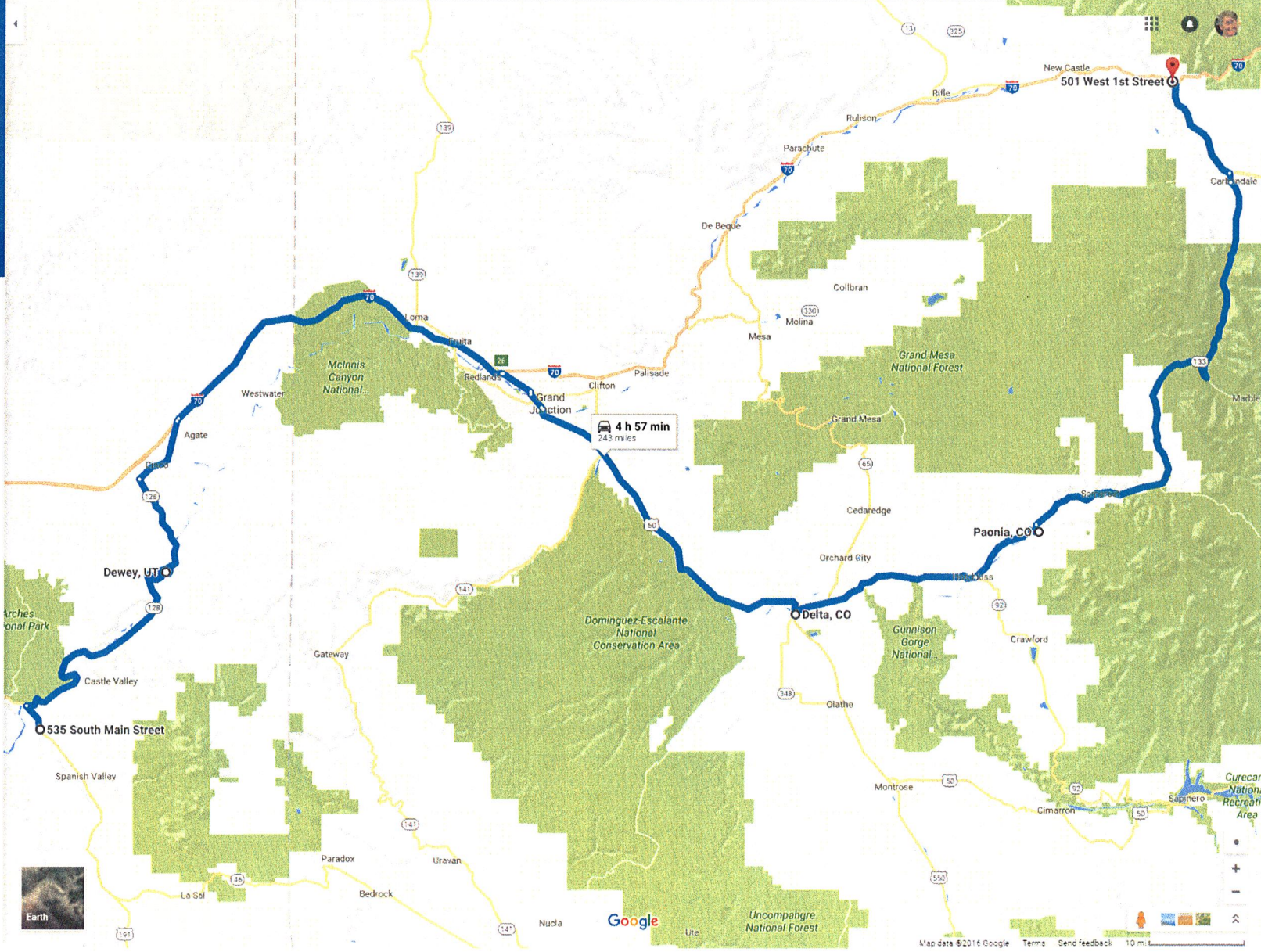
OPTIONS

Send directions to your phone

via UT-128 E 4 h 57 min 243 miles

4 h 57 min without traffic

DETAILS

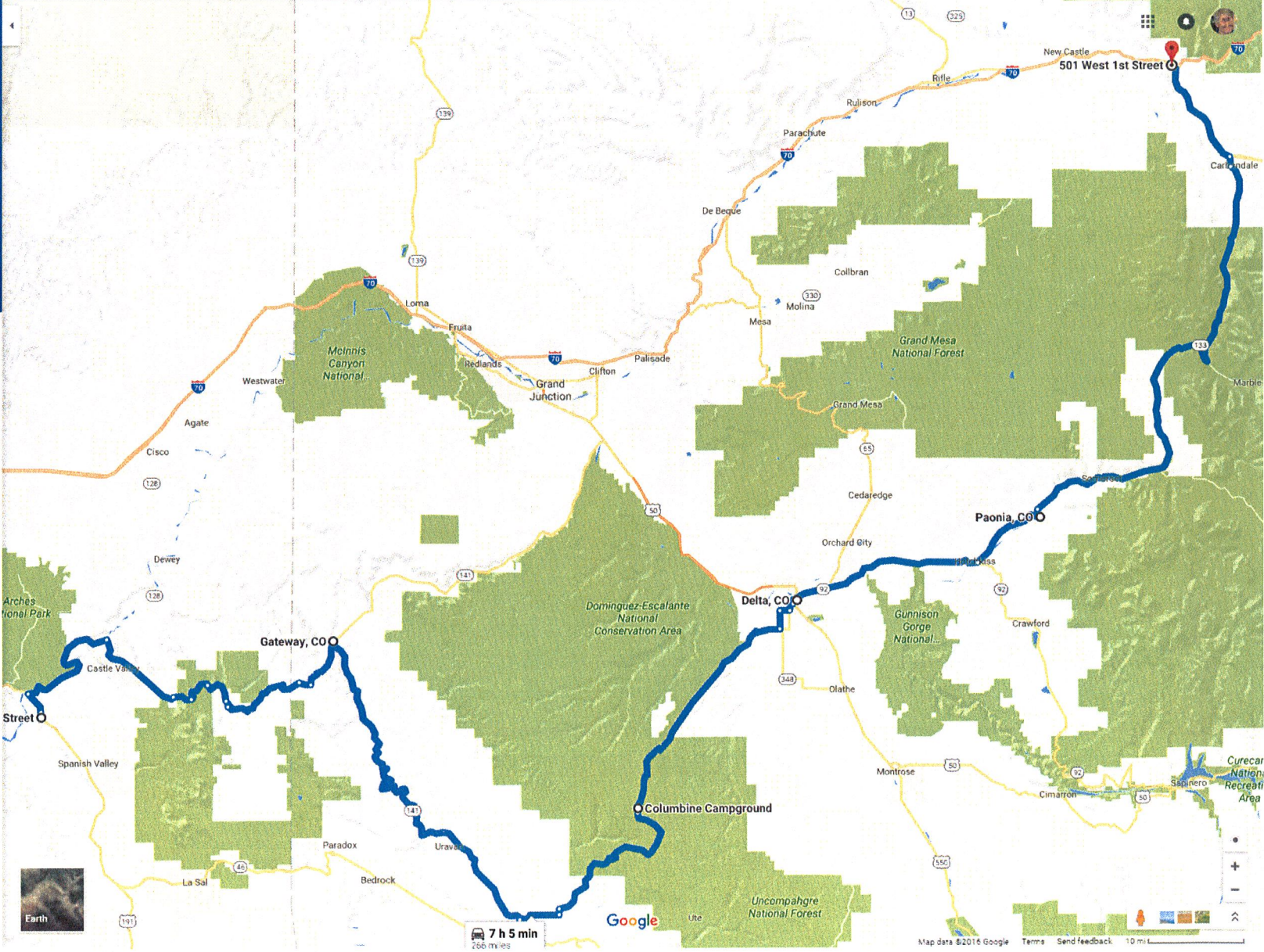


MAP 30

- 535 South Main Street, Moab, UT 84532
- Gateway, CO
- Columbine Campground, Nucla, CO 81601
- Delta, CO
- Paonia, CO
- 501 West 1st Street, Glenwood Spring

Send directions to your phone

via UT-128 E and Dolores Triangle Safari Rte 7 h 5 min
265 miles
7 h 5 min without traffic



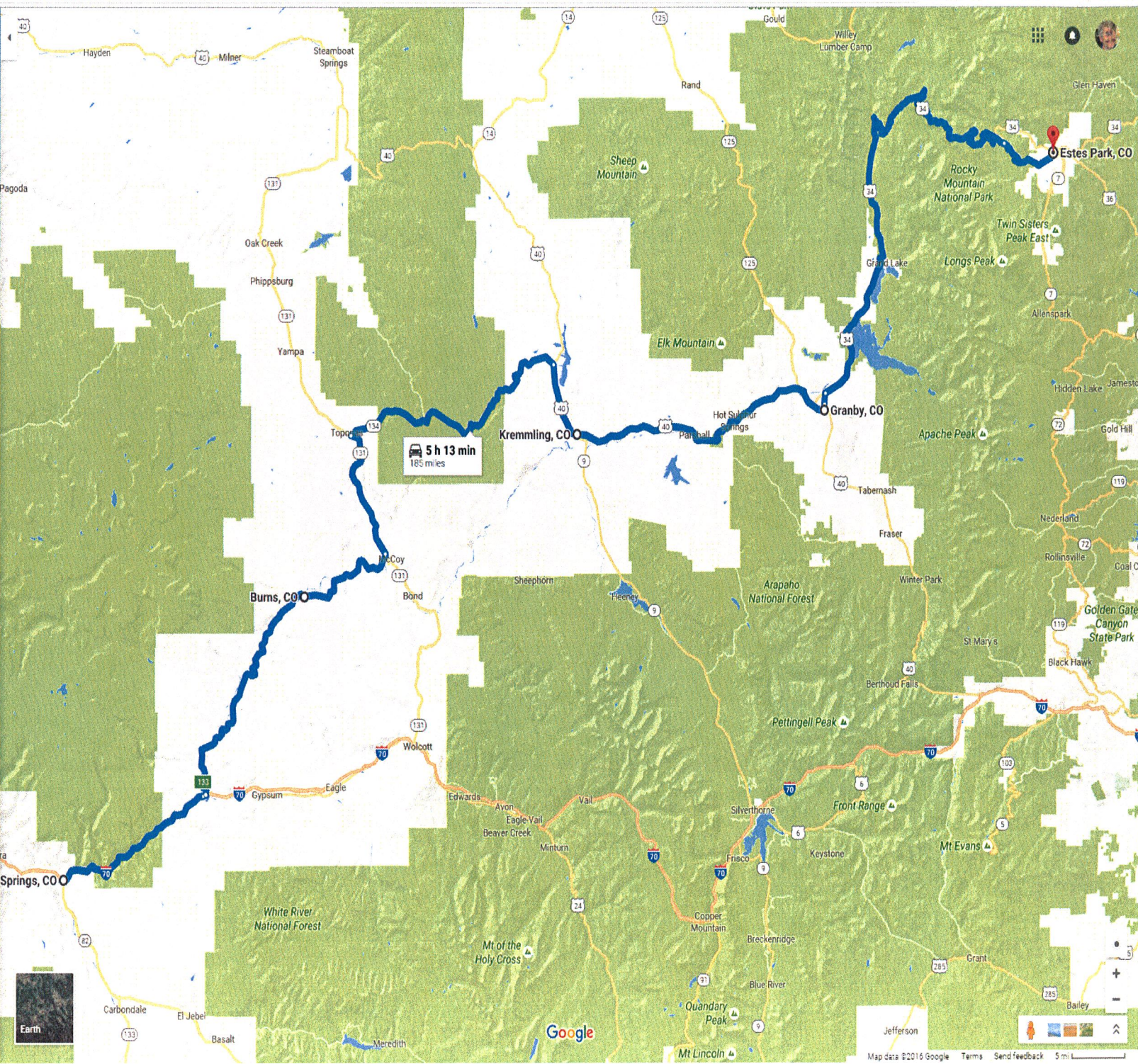
- Glenwood Springs, CO
- Burns, CO
- Kremmling, CO
- Granby, CO
- Estes Park, CO

OPTIONS

Send directions to your phone

via I-70 E and 301/Colorado River Rd 5 h 13 min
185 miles
5 h 13 min without traffic

DETAILS



MAP 32